

There's  
**infinite  
Hope** ahead

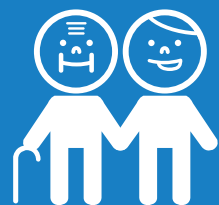


2020-2021  
**Annual Report**

# Our Services

2020-

No. of beneficiaries



Elderly Service

12,467  
Person-times



HOPE worldwide Centre  
for Kids

2,174  
Person-times



Dental Clinic

555  
Person-times



Over the past year, the pandemic had brought over many difficulties and new challenges. Due to social distancing restrictions and for the sake of safety of our service users, some of our services needed to be suspended or provided with limited extent, some activities had to be cancelled or postponed, while some plans had to be temporarily shelved.

In the meantime, social needs were increasing as a result of the pandemic. In addition to the daily needs of the elderly and the children, their emotional needs and health problems caused by being trapped at home for a long period had prompted us to make various alterations under such difficult situations and strive for ways to endure our services.

2021

# Our heartfelt thanks for **your support**

No. of participants



460

Person-times



Volunteers for  
Elderly Day



30

Person-times



Volunteers for Elderly  
Fall Prevention Project



244

Person-times



Volunteers for  
other services

We have been undergoing an earth-shaking situation. However, from another perspective, it gives us more opportunities to conceive various new directions and carry out feasible innovations and pioneering services. Even under such a hard time, we insist to adhere to our mission of "caring for each other, inspiring love and encouraging good deeds". A number of brand-new services have been launched to bring hope to more people in need.

The **Hope** You Are Bringing.  
The **Lives** You Are Changing.





## Everybody can healthily live at home at old age

According to a survey in the United States in 2020, the average life span and the average health span were 79 years old and 63 years old respectively, reflecting that there were around 16 years of incompetence to live alone and needed to be taken care of by the others.

No matter which age group one belongs to, the capability of self-care should be the desire of every person. In view of this, HOPE worldwide has just launched the 'Elderly Mobility Booster Program', targeting to shorten the '16-year' gap so that we can live independently and healthily at home at old age.

### Start with basic needs

Mobility limitation and incontinence at old age are usually the trigger points causing the family members to send the elders to the nursing home as they cannot afford to take care of them.

The 'Elderly Mobility Booster Program' starts with helping the elders to walk properly. It trains the elders to walk without any assistance. Under such a condition, the elders would no longer rely on diapers and this could relieve their pressure of going to toilet, thus easing them to eat and drink.

Proper movements, suitable eating habit and worriless of toileting at night could improve sleeping quality. This cycle of self-care ability enables the elderly to have a healthy and quality life.



### The debut of 'Elderly Mobility Booster Program'

The 'Elderly Mobility Booster Program' comes from the concept of self-reliance model, which is actively implemented in Japan and Taiwan. This program retrains the physical functions of the elderly so that they have basic self-care skills, thereby restoring their motivation to life and reducing the pressure on the caregivers.

The first goal of the 'Elderly Mobility Booster Program' is to assist the elderly to walk on their own. The elderly who are examined as frail and high risk would first undergo a health assessment by a physiotherapist to test their physical conditions. The problem areas are listed out for training. A professional fitness instructor will then help these elders to strengthen their muscles through pinpointing their physical weaknesses in order to restore their functions and reduce the risk of falls.

"Fitness coach is introduced in the program for the first time, with an aim to provide correct training to the elderly. However, self-motivation is very important. When the elders notice their improvement, they would do more exercise at home and the effect is obvious," the Director of HOPE worldwide pointed out. We have already conducted assessments for more than 300 elders and 140 of them are currently receiving exercise training in groups.



## Granny's humble wish: living healthily at home

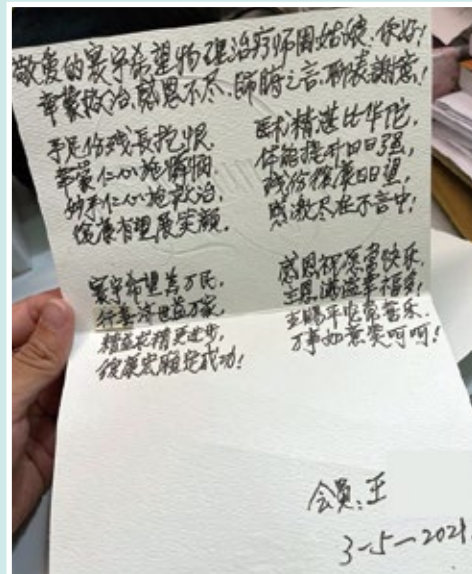
When Granny Wang first met the physiotherapist of HOPE worldwide, she just kept on crying, repeatedly telling the physiotherapist that her condition was being diagnosed as "no further treatment could be offered".

Granny Wang, who lives alone, is one of the beneficiaries of HOPE worldwide's meal delivery service. As the left side of her body is paralyzed, her mobility is restricted. Subsequent to her brain surgery 11 years ago, one side of her paralyzed body causes muscle degeneration on the other side due to insufficient follow-up treatment. Pain and various adverse conditions also follow as a result.

She is a CSSA beneficiary and cannot afford any medical treatment in private clinic. She used to rely on the help of social welfare organizations. However, Granny Wang's treatment has been suspended for a year due to the pandemic. Now her fingers are bent and cannot be straightened. Her wish is to stretch her muscles and relieve her pain.

The 'Elderly Mobility Booster Program' launched by HOPE worldwide has become Granny's hope. Other than relieving her problems, our physiotherapist also revitalizes Granny's weakened muscles. Granny Wang cherishes this opportunity and follows all the physiotherapist's instructions with regular practices. She has made significant progress after several treatments.

A thank you card from Granny Wang, expressing her gratefulness to the physiotherapy service. All of us are thrilled as the card is full of Granny's happy expressions.



## Getting strength to go out again

Granny Chau was unable to move due to herniated disc. Because of pandemic, she had not left her home for almost two years. She became very depressed for staying at home for too long and lacking of social interaction. She had a small wish, hoping to go out to visit the nearby supermarket again.

It would be a burden to an elder to take care of their sick spouse if they are living on their own. HOPE worldwide's 'Elderly Mobility Booster Program' has a vision to train the sick elders to regain mobility and relieve the pressure on the caregivers. It also aims to help the elderly to rebuild a quality and healthy life.

Since Granny Chau had been in such a condition for a while, she was diagnosed with various illness including paralysis, inability to straighten her waist and lack of walking ability of one leg. After assessment, our physiotherapist started giving her special treatment. Together with her rehabilitation exercise, her improvement was obvious which motivated her to do more exercise in accordance with the guidance of the physiotherapist.

After more than two months, Granny Chau can now go out to enjoy meal in restaurants and do shopping in supermarket every day. Her improvements are very encouraging, and her mental health has also recovered accordingly.



## Precious Link Center

The Precious Link Center is established since 2020 in response to the needs of the elderly. It supports the elderly who are aged 60 or above living in Sham Shui Po district and acquiring financial assistance. The Center specifically assists those elderly who have social, cognitive and oral health needs. Despite the restrictions due to the pandemic, we had successfully launched different small group activities over the past year to maintain contact with our members.

## Elderly Fall Prevention Program

Most elders are more prone to falls and the consequences can be quite serious. Therefore, HOPE worldwide plays great efforts to promote the 'Elderly Fall Prevention Program'. Since the launch of this Program in 2005, we have provided services to more than 16,000 elders.

This program offers both individual assessment of the physical condition of the elderly and preventive measures to reduce accidents. In order to continue this service during the pandemic, besides inviting the elderly to our Center for our occupational therapists to conduct tests, we also carried out the tests and home safety assessments at the elders' homes.

More than 140 elders have been examined so far, the high-risk group is invited to participate in the elderly exercise classes for muscle-training and osteoporosis prevention. In addition, fall prevention equipment is installed at the elders' homes and they are trained to use the walking equipment to reduce the risk of falling.

## Elderly Volunteers

We often need additional helpers for organizing different events. We are thankful to get support from various enthusiastic volunteers and organisations. Among them are some elders and we recently give them a formal invitation to become our elderly volunteers. Besides their participation in caring for others, the volunteer services could give them some chances to exercise their body and mind.

The first activity of the elderly volunteers was to visit the HOPE worldwide Dental Clinic, letting them to understand our mission and scope of services.



Although Granny Leung (right) is living on a wheelchair, she is actively involved in different voluntary services. Please give a "like" to her.

## Community Care Service for the Elderly

We are appointed by the Social Welfare Department as a community care service provider for the elderly. The elderly would only need to present the 'Community Care Service Voucher for the Elderly' for various home services provided by us, including meal distribution, hospital escort, rehabilitation treatment, nursing services, personal care, household cleaning, speech therapy, etc.





**Game training:** The students got the firsthand feelings of the elderly by wearing blindfolds or tying their feet in order to understand the elder's poor vision or mobility limitation.



**Game training:** The students tasted the feelings of the elderly by sitting on a wheelchair blindfolded, lacking communication with the 'caregiver' or being abandoned in an unknown place.



After the game training, the students wrote down their feelings.



## The 25th HOPE worldwide Elderly Day

Elderly Day is an annual large-scale service organized by HOPE worldwide. It gathers thousands of volunteers to visit the the elders living in the public housing estates and different old districts, showing their care to the elderly who are living alone and with spouse. In addition to visits, other caring services include home cleaning, dental examinations, dementia tests, nursing homes visits, delivery of goodie bags, etc. More than 17,500 elders have been benefited under this event since 1996.

The latest Elderly Day was also affected by the pandemic. We tried to adopt different ways to keep our service to the same level as past years. We finally managed to send out more than 500 volunteers to deliver goodie bags to 1,260 elders living in Sham Shui Po, Shek Kip Mei, Wong Tai Sin, Yau Tong and Tuen Mun districts on the 31 of January 2021.

Some elders had stayed home for a long time because they were worried about the pandemic. During the visits, the volunteers could chat with them and listen to their needs. Some elders were afraid of going out because of insufficient anti-pandemic supplies. The goodie bags delivered by the volunteers included some food and protective materials. Some elders were forced to stay at home due to restricted gatherings and could not participate in different activities. The volunteers' visits could bring some joy to them.

A visit, a phone call and an expression of care can bring warmth to the elderly; especially in such a hard time, the elders do need extra care and understanding.







## 80+20 Community Elderly Oral Health Program

HOPE worldwide sets up two dental clinics in Sham Shui Po and Kwai Fong since 2017 that are operated as social enterprise. Our mission is to provide high-quality dental services to local community at reasonable charges, helping the elderly and low income families who are in need.

The aim of the '80+20 Community Elderly Oral Health Program' is to help the elderly to

improve their awareness of oral care and retain at least 20 teeth at the age of 80. This project has achieved satisfactory results in Japan. According to different surveys, 60% of the elderly in Hong Kong who have reached the age of 65-74 have fewer than 20 healthy teeth, only 20% of the elderly have regular dental check-ups. When encountering oral problems, less than 50% of the elderly would seek professional dental care.

Many elderly rarely take care of their teeth if they do not have toothache problems. This reflects the need for more education and publicity to help them increase their oral care knowledge. On the other hand, many low income elders ignore the importance of dental health due to cost issue.

We introduce this concept to Hong Kong since 2019 and launch the '80+20 Community Elderly Oral Health Program'. Our dentists are sent out to different elderly centers in Kowloon offering dental examination. Some technology is adopted to help the elderly to understand their oral situation, and at the same time, teaching them how to maintain oral health. The dentists would refer those with dental needs for free scaling service at our clinics or provide financial assistance for other dental care services. Even under the pandemic, this project has so far cooperated with 6 elderly centers to conduct 15 dental examination sessions, benefiting more than 700 elders and among them, 425 have been funded.



At present, we have participated in the 'Elderly Dental Services Subsidy' program of the Community Care Fund, so that recipients of elderly living allowance can receive free dental treatment. At the same time, we have been approved by the Social Welfare Department as a 'designated dental clinic' to provide dental quotation and treatment services for CSSA beneficiaries who are eligible for dental allowance.

## Helping low-income families and children to 'Smile Again'

Sponsored by the HSBC Hong Kong Community Partnership Program, the new Smile Again Program launched by HOPE worldwide will be extended to low-income families and their children aged 0-6, providing free dental examination and scaling services. For those in need, please contact HOPE worldwide Dental Department.

The Smile Again Program has taken care of 400 low-income family children with emotional, mental or behavioral disorders; physical disabilities; and special educational needs (SEN). Experienced dentists are assigned to give them special dental examinations and scaling service.

## HOPE worldwide Dental Clinic

Shop C, G/F Kin Sun Building,  
157 Kweilin Street, Sham Shui Po

Tel: 2156 2055

G11, G/F Hang King Shopping Arcade,  
9 Wing Fong Road, Kwai Chung

Tel: 2157 3740





## 'A Village Makes SENSE' Program

HOPE worldwide's 'A Village Makes SENSE' Program is a one-stop learning center for caring the children who have special educational needs (SEN). Other than helping the students to complete their homework, we also focus on building their characters and social skills.

### The first tutor course on game counseling

Donated by the Swire Charities Trust, the HOPE worldwide Center for Kids sets up the first game counseling zone with The Education University of Hong Kong. A 3-month tutor course for children counseling based on games had been held, aiming to support and enhance the services for the SEN-children, and intensify the effect of counseling through interesting games.



The first phase started with 20 students and professionals from the Education University of Hong Kong to provide one-on-one internship training to 15 children. Through game intervention, information and data was collected by the college students and the teachers who would then prepare the game curriculum. The courses which include theory, practical training and evaluation, will be held in the form of online classes, role playing, interactive observation, exchange, sharing, etc. It is tentatively planned to extend the

scope of counseling to the parents of these school children in the second phase and provide personal counseling to the children.

The HOPE worldwide Center for Kids has served 29,300 children from the low-income families, providing after-school learning assistance and character-building guidance, hoping to break the cycle of poverty for these families.

Up to now, the no. of beneficiaries include:



Low income family  
**9,875**



Children from low income family  
**29,300**



Children with special educational needs  
**130**

## HOPE worldwide's Home for Children

The HOPE worldwide Women and Children's Social Service Center in Chengdu launches the 'Sunflower' activity by adopting multiple intelligences. Picture books are used to let the children to observe the growth process of sunflowers for improving their observation ability. While making flowers with their parents is a way to develop these children's hands-on ability, it could also enhance parent-child relationship.

This activity also trains the children to do finger exercises with their parents to enrich their language skills and strengthen their finger muscles. Learning to observe with a mirror, the children can carefully understand the details that are not often found. If drawing through dictation can stimulate a child's thinking, then blindfolded drawing would mean the mobilization of their facial features.

No rigid requirement of material, only waste materials are used. It is a good way of self-development through creation and it can also broaden and activate thinking.



## Happy Mid-Autumn Festival



After a long period of restrictions on gatherings, a lantern riddle game was organised for the Mid-Autumn Festival in 2020 to let the elderly felt the festive atmosphere. The elders were invited to visit our Center for mooncakes and played the games which could encourage them to go outdoors and stretch their bodies. It was a good exercise to the elderly as mental training can reduce the speed of brain degeneration. Special thanks to Target Sourcing Services for donating more than 230 mooncakes to HOPE worldwide.



Special thanks to Target Sourcing Services for donating more than 230 mooncakes to HOPE worldwide.

## Sterilized the homes of the elderly

The vulnerable group, including the elderly and the infirm, has to be particularly careful due to the widespread of coronavirus. Special thanks to Nano Solution for donating more than 2,000 bottles of Japanese photocatalyst coatings to us which had the functions of disinfection, sterilization and cleansing. Other than distributing the liquid to those in need, we also dispatched volunteers to the homes of 15 elders who were living alone to help them spray the photocatalyst coatings on furniture and frequently touched areas.



2020 -

2021 :

Unwilling to stop, st

## The Prince Philip Dental Hospital

HOPE worldwide Dental Clinic was invited by the Prince Philip Dental Hospital of the University of Hong Kong to assist them in a project called 'Research on Elderly Dental Outreach Services and Effectiveness in the Community', arranging dentists to provide dental examination to the elderly in the district elderly centers for a report and promote the effectiveness of dental care for the elderly. A total of 167 elders were benefited from these 3 sessions of dental examination service.



## Rice Dumplings for the Dragon Boat Festival



Eating rice dumpling is the best activity to celebrate the Dragon Boat Festival. We were very grateful to receive 150 rice dumplings from Target Sourcing Services as donation for the elderly members of the Precious Link Center so that everyone could enjoy the festival.

## Book bazaar for



Many schoolchildren online lessons at boring. In order for to develop good re books bazaar was Books Tuft book raising money to s educational need ( activity also serve promoting our se community, other t able books to the low-income familie of HOPE worldwide Sun and his wife, M also visited and bo the bazaar to show



## HOPE worldwide Flag Day



Our heartfelt thanks to the support of more than 500 volunteers, school teachers and students, so that the HOPE worldwide Flag Day could be successfully held on November 21, 2020. Both physical and online flag sales were carried out for the first time and we had successfully raised more than \$300,000 funds for the HOPE worldwide Center for Kids to help the children from the low income families with special educational needs (SEN) to receive professional training. Can you still remember these funny whatsapp stickers?



## HOPE worldwide Santa Run



HOPE worldwide Santa Run is an annual event held before Christmas, which is a good opportunity to exercise with a group of friends for charity. The HOPE worldwide Santa Run in 2020 was held in the form of 'virtual run'. Even limited by social distancing, some runners managed to participate in the event together with their children, showing 'Run Together and Have Fun Together'! The purpose of this fund-raising was to support HOPE worldwide's services for the children with special educational needs (SEN), which attracted over 100 families with SEN children to participate. Their support could demonstrate the power of supporting each other.



# Striving to bring hope during the pandemic

## Support for SEN children



Children would find taking home is dull and to encourage them reading habit, a used organized with The bookstore for weeks, support the special (SEN) children. This and the purpose of services to the local than offering afford- children from the s. The ambassador e, Mr. Cheung Man Ms. Chea Shuk Mui, ught some books in their support.

## Keep Everything Simple



Though no one could escape death, it is still a taboo to some people, especially some Chinese. HOPE worldwide invited Mr. Pasu Ng, the founder of a social enterprise, Keep Everything Simple, to hold a life and death education talk for the elderly. The theme was 'How to Handle End-of-Life Medical Care', letting the elderly to understand the choices once they are seriously ill and the function of 'advanced medical instruction'. A video crew from the Radio Television Hong Kong was presented for capturing shots for a related special. After the talk, the elders were invited to visit the Keep Everything Simple office to understand various possible arrangements for their last affairs.

## Smile Again Program extends to disabilities

We are working together with the Operation Santa Claus project of the South China Morning Post and a number of NGOs to provide dental care services to 400 people with emotional, mental, behavioral or physical disabilities; as well as those children from the low-income families with special educational needs (SEN). Each eligible person would receive a subsidy of \$1,500 for dental examination and scaling services.



## Elderly Day Care Center

In just over a year since its establishment during the pandemic, the Precious Link Center has served 10,329 elders. We are very encouraged that our innovative services continue to be recognized by our target users and the other organisations. However, due to the ageing population, the demand for long-term care services would continue to rise. Following the establishment of the HOPE worldwide Dental Clinic and the Precious Link Center in the first phase, we are now actively raising funds to set up a day care center for the elderly, hoping to further provide comprehensive services for the elderly.



## HOPE worldwide Elderly Day

We are very grateful that the last HOPE worldwide Elderly Day could successfully be held under the pandemic. We have scheduled the next HOPE worldwide Elderly Day to be held on 16 January 2022 and will do our best to maintain the same services with our volunteers, providing visits, home cleaning, dementia assessment, dental care and other services to more than 1,000 elders living alone or with spouse.



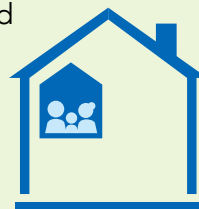
## Self-reliance Elderly Care

We will expand the brand-new elderly care model of self-reliance so that the elderly can live happily and healthily, through assisting them to achieve the goal of three noes (no diapers, no bed rest, and no restraint). While maintaining the health and the basic physical functions of the elderly, this would ultimately enable the elderly to live independently and reduce the burden on the caregiver.



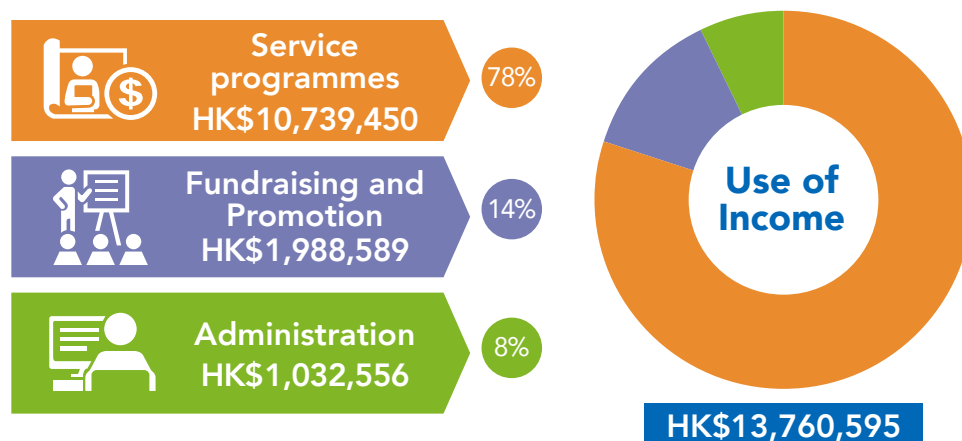
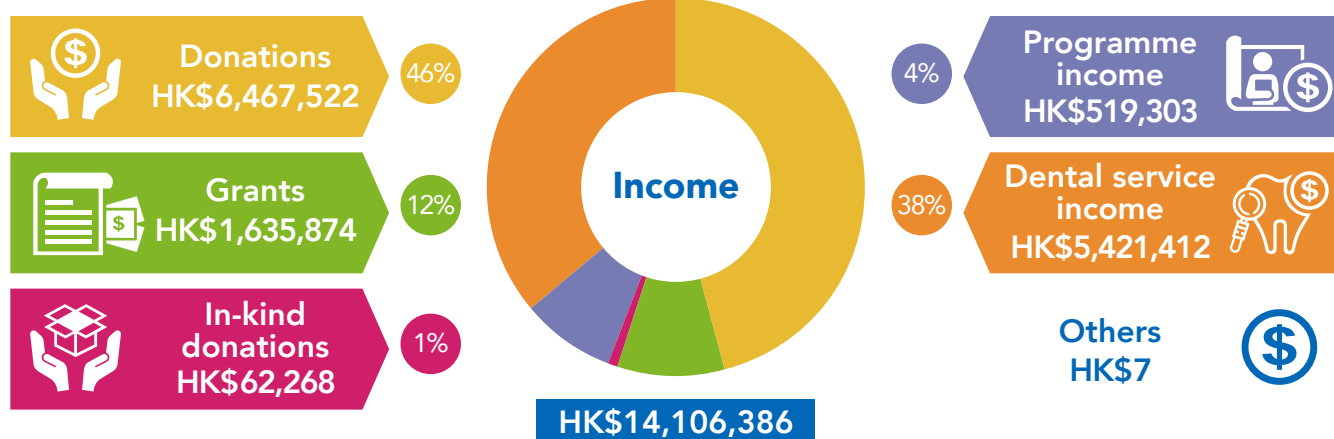
## Supporting Subdivided Unit Households Program

HOPE worldwide is invited to become one of the service partners of the Supporting Subdivided Unit Households Program, which is sponsored by the Hong Kong Council of Social Service and the Hong Kong Land Group Limited. The purpose is to provide a series of diversified activities and supports for the young people living in subdivided units to expand their life experience and insights, striving for better opportunities. This program will be started in November 2021.



HOPE worldwide always adheres to the conviction of 'good steward' in the Bible and spends most of the donations on the beneficiaries. It is our aim to maintain the administrative expenses within 10% of the total expenditure. In 2020, 8% of the total expenditure was allocated to support different service programs and activities.

## HOPE worldwide (Hong Kong) 2020 Financial Statements



**Deficit**  
HK\$345,791





# Heartfelt Thanks to Your Generous Donations and Supports

## Corporations / Organisations

- Alfara Charitable Trust
- Auto Spare Parts GmbH Ltd.
- Bond West Consultants
- C & Y Accounting Management Ltd.
- Cheong Tai International Holdings Limited
- Chinese International School
- CreativeKids
- Fiducia Limited
- Fubon Life Insurance (Hong Kong) Company Limited
- Herbalgy Pharmaceutical Ltd.

- Hong Kong Baptist Mr. & Mrs. Au Shue Hung Rehabilitation & Healthcare Home
- Hong Kong Church of Christ
- Hopkins Training & Education Group Limited
- 2020 HSBC Hong Kong Community Partnership Programme 2020
- International Management Association
- KONE Elevator (HK) Ltd.
- Lee Kum Kee
- LHM Medical Technology (Hong Kong) Limited
- Organic Plus

- Shanghai Tunnel (Hong Kong) Co Ltd
- Target Sourcing Services Hong Kong Limited
- The Hong Kong Mortgage Corporation Limited
- The Swire Charitable Trust
- Supporting Unit for Special Educational Needs (SuSEN), The Education University of Hong Kong
- Wasser Beauty
- Tin Tin Services Management Ltd.
- Wells Fargo Bank N.A.

## Individuals

Alice & Ken Chan	Chan Han Lai	Chan Pak Chu	Chan Wing Yu	Chen Minghui Amy	Cheung Hon Wing	Ching Lai Ching	Chow Jok Mei	Chung Jeffrey
Anthony Lam	Chan Hei Kuen	Chan Pen Wye-Po	Chan Wo Chuang	Chen Pak Ming	Cheung Hung	Ching Shiu Lin	Chow Kai	Chung Ka Wing
Au Ka Wai	Chan Hin Lung	Chan Pik Kwan	Chan Yat Lung	Chen Pan Yin	Cheung Ka Hung	Ching Sik Tai	Chow Kai Kwan	Chung Kam Ip
Ang Ching Gi	Chan Hing Fung	Chan Po Chun	Chan Yat Sun	Chen Shun	Cheung Ka Lok	Ching Wan Fung	Chow Kit Leong	Chung Kwok Choi
Au Chi Chung	Chan Hiu Ching	Chan Pui Chi	Chan Yau Shing	Cheng Cheung Fat	Cheung Ka Pang	Ching Yiu	Chow Kit Lun	Chung Kwok Yung
Au Huen Man	Chan Hiu Nam	Chan Pui Chun	Chan Yau Tai	Cheng Chi Kit	Cheung Ka Shing	Ching Yuen Lai	Chow Kit Wai Shirley	Chung Lai Na
Au Kin Wai	Chan Ho Kwan	Chan Pui Ka	Chan Yee Heung Sarah	Cheng Chi Wing	Cheung Kam Lan	Chiu Chung Man	Chow Ku Kwan	Chung Lin Fa
Au King Yip	Chan Ho Lun	Chan Pui Lun	Chan Yee Lin	Cheng Chi Ying	Cheung Kim Wah Stanley	Chiu Ka Moon	Chow Kuok In	Chung Mok Siu Lan
Au Kwai Poon Pauline	Chan Ho Yin	Chan Pui Sze Candy	Chan Yee Ling Eling	Cheng Chun Yin	Cheung Kwok Wing	Chiu Lai Kwan	Chow Lai Chi	Chung Pak Chung
Au Kwan Sui	Chan Hoi Kee	Chan Sau King	Chan Yet Loong	Cheng Ka Wah	Cheung Lai Fan	Chiu Man Ho	Chow Lai Kuen	Chung Shek Kiu
Au Kwok Chung	Chan Hoi Kei Katie	Chan Sau Kuen	Chan Yik Tang	Cheng Kai Hung	Cheung Lai Fong	Chiu Ngar Yin Joe	Chow Mei Mei	Chung Shuk Kwan
Au Mei Sze	Chan Hok Ching	Chan Sau Kuen	Chan Yim Mui	Cheng Kin Wun Edwin	Cheung Ling Phionna	Chiu Ping Fai	Chow Ming Chu	Chung Shuk Ying
Au Ngai Yan Kanlice	Chan Hung	Chan Sau Kuen	Chan Yin Ho	Cheng Kwan Ho	Cheung Man Cheung	Chiu Pui Kwan	Chow Pok Yin	Chung Wai Chun
Au Pong Lin	Chan Ka Ching Adam	Chan Sau Ming Edith	Chan Yin Mei	Cheng Ling Yin	Cheung Man Chi	Chiu Pui Kwan	Chow Pui Man	Chung Wai Hang
Au Pui Yan	Chan Ka Chun	Chan Sau Wa	Chan Yin Ping	Cheng Long Si	Cheung Man Chung Henry	Chiu Pui Pui	Chow Pui Sze	Chung Wai Kuen Annie
Au Sing Chun	Chan Ka Ho	Chan Sau Wai	Chan Yin Sum	Cheng Man Chung	Cheung Mei Chi	Chiu Shuk Yi Windy	Chow Pui Yee Marcella	Chung Yan Ho
Au Sui Kwan	Chan Ka Ling	Chan Sau Nga	Chan Yin Tik Alex	Cheng Man Kuen	Cheung Mei Fong	Chiu Sin Ching Alice	Chow Sau Yee	Chung Yau Lin
Au Tien Ming Peter	Chan Ka Man	Chan Shui Tai	Chan Yiu Fai Youdey	Cheng May Wah Bonnie	Cheung Mei Po	Chiu Tak Yee Amy	Chow Sau Yee	Chung Yeung Sing
Au Wing Keung	Chan Ka Ming	Chan Shui Tak	Chan Yiu Hon	Cheng Mei Man	Cheung Mei Sum	Chiu Wai King	Chow Shuk Ping Ada	Chung Yew Kwong Henry
Au Yeug Fung Kwan	Chan Ka Wai	Chan Shuk Fun	Chan Yu Ho	Cheng Nga Hung	Cheung Mei Yee	Chiu Wai Shan	Chow Tak Kin Aaron	Dai Yunting
Au Yeung Ka Yin	Chan Ka Wai	Chan Shun Ching	Chan Yu Ming Emil	Cheng Nga Yan	Cheung Melody	Chiu Yan May Helen	Chow Tsz Hong	Debby & David Fong
Au Yeung Lung	Chan Ka Wai	Chan Shun Ching	Chan Yuen Ching	Cheng Oi Kwan	Cheung Mi Lin Anita	Chiu Yu Ching	Chow Tsz Pan	Deng Xiao Lan
Au Yeung Oi yee	Chan Kai Yau	Chan Shun Man	Chan Yuen Han	Cheng Pui Fun	Cheung Ming Wang	Ching Asther	Chow Tsz Yan	Ding Yim Lin
Au Yuk Yee	Chan Kam Kwong	Chan Sing Leung	Chan Yuen Hung	Cheng Siu Fun	Cheung Nga Ling	Ch'ng Se Min	Chow Xu Teng Mary	Duncan Wong
Bahadue Ghale Chandra	Chan Kam Kwong	Chan Siu Mui	Chan Yuen Man	Cheng Sui Ha	Cheung Oi Lam Audrey	Cho Shun Ho	Chow Yim	Eddie Li
Banks Caroline	Chan Kam Wai	Chan Siu Wai	Chan Yuen Sze	Cheng Sze Nga	Cheung Ping Chi	Chow Shing Tak	Chow Yin Yee	Faith Delrosario
Bella & Kaiser Chiu	Chan Kam Mui	Chan Siu Ying	Chan Yuen Yam	Cheng Tsz Yan Natalie	Cheung Poon Mei Yee	Choi Charlotte	Chow Yin Yee, Edith	Fan Chun Lung
But Hoi Yan	Chan Kam Wah Michelle	Chan Siu Yung	Chan Yuet Ying	Cheng Wai Salina	Cheung Sau Fun	Choi ChuiFan	Chow Yuen Cheong Charles	Fan Hoi Yan Shirley
Cathy & Edmund Bui	Chan Kar Man	Chan Suet Lai Shirley	Chan Yuk Chun	Cheng Wing Cheung	Cheung Sau Kwan	Choi Hui Fung Davis	Chow Yuen Yee	Fan Ka Wai
Chan Cheuk Hon	Chan Kin Man	Chan Sui Chun Irene	Chan Yuk Fan	Cheng Wing Ho	Cheung Shao I	Choi Hoi Yan	Chow Ting Kwan	Fan Ka Wing
Chan Cho Leung	Chan Kin Wah	Chan Sui Kwan	Chan Yuk Lung	Cheng Yik Fook	Cheung Shuk Ting	Choi Ka Yuen	Choy Pui Man	Fan Kit Fai
Chan Fong	Chan Kin Wah	Chan Sui Sing	Chan Yuk Mui	Cheng Yee Nei	Cheung Sik Man	Choi Kit Yee	Choy Siu Wan	Fan Sau Kum Corina
Chan Lan	Chan King Man	Chan Suk Man	Chan Yuk Shan Bonnie	Cheng Yee Sang	Cheung Sing Din	Choi Kwok Keung	Choy Tsam Ue	Fan Sze Ling
Chan Ping Kwai	Chan Pun Lap Bernard	Chan Suk Yee	Chan Yik Lam	Cheng Yik Lam	Cheung Siu Chuen	Choi Lai Ching	Choy Yiu Fai	Fan Wai Ching Vicky
Chan Sau Chun	Chan Kit Sum	Chan Sze Kwong	Chan Yin Hung	Cheng Yin Hung	Cheung Soo Ching Ivy	Choi Lai Wan	Choi Yiu Kin	Fan Wai Ling
Chan Yin Kwan Grace	Chan Kok Wing	Chan Sze Nga	Chang Bee Wan	Cheng Yin Man	Cheung Suet Ling	Choi Lai Wan	Chu Kin Sum	Fan Yat Fong
Chan Yuk Fun	Chan Kok Wing	Chan Sze Wan	Chang Hung Yu	Cheng Yik Sum	Cheung Sui Fong	Choi Long Ho Justin	Chu Yin Yee	Fanny & Danny Choi
Chan Che Wah	Chan Kuen Chau	Chan Tak Cheung Alexander	Chang Ka Chung	Cheng Yuen Ting	Cheung Sui Heung	Choi Man	Chu Cheuk Yin	Feng Hua
Chan Cheong Shing	Chan Kwan Yee	Chan TF Philos	Chang Kin Man	Cheng Yik Ming	Cheung Suk Kay	Choi Man Wai	Chu Chun Wai	Fok Chi Cheong
Chan Cheuk Kee	Chan Kwan Yee	Chan Tih Che	Chang Koon Fai	Cheng Yik Yip	Cheung Tak Wai	Choi Pak Ho	Chu Kuen Wai Edmond	Fok Ka Yee
Chan Chi Hung	Chan Kwei Fun	Chan Tik Yee	Chang Mui Ling	Cheok Wing Hong	Cheung Ti Wai	Choi Pui Hei	Chu Li Fun	Fok Koon Ting
Chan Chi Kei	Chan Kwong Sun Sunny	Chan Ting Him	Chang Shun Ming	Cheong Lok Yung	Cheung Tsan Yiu	Choi Sai Fung Joey	Chu Man Wa	Fok Wai Ip
Chan Chi Man	Chan Kwok Kai	Chan Victor	Chang Tung Chung	Cheuk Kam Lok	Cheung Tsz Mei	Choi Sau King	Chu Mei Wah	Fok Yuk Chun
Chan Chi Wai Willy	Chan Kwok Lap	Chan Wah Hung	Chang Wai Hung	Cheuk Man Tak	Cheung Vivian	Choi Sau King	Chu Miu King	Fona & Wang Hui
Chan Chi Wing	Chan Lai Na Yat Kay	Chan Wai Choi	Chang Wai Lin	Cheung Chin Pang	Cheung Wai Chun	Choi Siu Ming Agnes	Chu Miu Wah	Fong Fuk Yung
Chan Chi Yan Ada	Chan Lai Tan	Chan Wai Fong	Chau Chi Kwong	Cheung Ka Shing	Cheung Wai Hung Joeie	Choi Sze Wa	Chu ShuiFang	Fong Hiu Fung
Chan Chik Man	Chan Lai Yung	Chan Wai Hung	Chau Chiu Keung	Cheung Po Wah	Cheung Wai Keung	Choi Tim Lok	Chu Suk Ching	Fong King Hang
Chan Ching Man	Chan Lai Yung	Chan Wai Jong	Chau Chun Ming	Cheung Sing Chen	Cheung Wai Ping	Choi Tung Ki	Chu Suk Chun	Fong Kwai Chuen
Chan Ching Tung	Chan Lai Fung	Chan Wai Kai	Chau Kin Lung	Cheung So Kuen	Cheung Wan Yin	Choi Tze Ho	Chu Tze Ming	Fong Lai Yee I
Chan Ching Wan	Chan LaiFan	Chan Wai Ki	Chau Kong Ha	Cheung Ada	Cheung Wang Hong	Choi Tze Wing	Chu Wai Ming	Fong Lap Tak
Chan Ching Yee	Chan Lap Kin	Chan Wai Ki	Chau Man Wai	Cheung Chad	Cheung Wing Foon	Choi Wai Ling Wendy	Chu Wai Yi	Fong Man Piu
Chan Chiu	Chan Leung Yuen	Chan Wai Ki Vicky	Chau Po Wai	Cheung Cheung Yee Geoffrey	Cheung Wing Nga Anna	Choi Wai Ming	Chu Wing Cheong	Fong Ngan Kuen
Chan Chiu Hei	Chan Lim Chee	Chan Wai Kit	Chau Sai Hong	Cheung Chi Cheung Frankie	Cheung Wing Wah Katy	Choi Wai Ming	Chu Yat Wing	Fong Siu Ying Serena
Chan Cho Yin	Chan Lisa	Chan Wai Lam	Chau Shun Kai	Cheung Chi Kit	Cheung Wo Fuk	Choi Wing Ting Abby	Chu Yau Chai	Fong Suk Yee
Chan Choi Fun	Chan Lok Ki	Chan Wai Man	Chau Siu Ha	Cheung Chi Kwong	Cheung Yin Ching	Choi Wing Yin	Chu Yin Wun Eunice	Fong Tsz Ho
Chan Choi Lin	Chan Lok Pan	Chan Wai Ming	Chau Suk Mei Elisha	Cheung Chi Ming	Cheung Yung Hing	Chong Fei Lop Philip	Chui Chi Wah	Fong Tze Hang
Chan Choi Luen	Chan Man Ching	Chan Wai Mui	Chau Tsui Ping	Cheung Chi Yung	Cheung Yiu Leung	Chong Ka Leung	Chui Kai Tai Tommy	Fong Wai Man
Chan Chor Ho	Chan Man Chun Andy	Chan Wai Yiu	Chau Wan Yee	Cheung Ching Ping Stephen	Cheung Yik Leung	Chong Kim Tun	Chui Ka Ming	Fong Wu Shuen
Chan Chuen Ming	Chan Man Kin	Chan Wai Yiu	Chau Wing Kin	Cheung Chun Chung	Cheung Yik Leung	Chong Shing Ho	Chui Kai Tai Tommy	Fong Yik Fun
Chan Chui Fung	Chan Man Wa	Chan Wai Yiu	Chau Yue Kie Cherry	Cheung Choi To	Cheung Yik Leung	Chong Wai Man Susanna	Chui Kwok Wah	Foo Yuk Ling
Chan Chui Kuen	Chan Man Yi	Chan Wai Yiu	Chau Pui Shan Maria	Cheung Choi Ying	Cheung Yik Leung	Chong Yee Wing Elaine	Chui Sze Wa	Fu Wai Chee Ada
Chan Chui Yu	Chan Mei Kuan	Chan Wai Yiu	Che Sau Wai Angela	Cheung Chun Chung	Cheung Yik Leung	Chong Yuk Hung	Chui Wai Sheung Estella	Fu Siu Mi
Chan Chun Lam	Chan Mei Yan	Chan Wai Yiu	Cheung Shuk Wah	Cheung Chun Tim	Cheung Yik Tak	Chong Tin Lung B	Chui Ying Wai	Fung Lin Hoi Rita
Chan Chun Shing	Chan Mei Yung	Chan Wai Yiu	Chen Chi Chung	Cheung Chung Wang	Cheung Yik Shan	Connie Tsui	Chuk Kit Yee Teresa	Fung Yuk Ching Kitty
Chan Chun Yau	Chan Mi Mi	Chan Wan Sze	Chen Chi Fai	Cheung Fuk Yau	Cheung Po Yin	Chou Ka Lun	Chum Wai Man Cindy	Fung Chi Fai
Chan Chung Shing	Chan Ming Chi	Chan Wan Sze Samantha	Chen Chi Lee	Cheung Hau Fuk	Chi Chung Huei	Chou Meng Ling	Chum Wai Yung	Fung Chi Keung Jam
Chan Chung Yiu	Chan Ming Chung	Chan Wang Kwan	Chen Guo Wei	Cheung Hau Yee	Cheung Chung Man	Chow Kit Sun Gary	Chun Ping Kan	Fung Chi Wan
Chan Fan Yee	Chan Miu Sheung Wendy	Chan Wing Fu Ivan	Chen Hsiu Li	Cheung Hing Mui	Chiang Kai Ming	Chow Chit Wing	Chun Sheung Chit S	Fung Chung Hoi
Chan Fat Sang	Chan Mui Hong	Chan Wing Hung	Chen Jie Ling	Cheung Ho Yin	Chiang Siu Yan	Chow Chiu Mo	Chung Chun Ming	Fung Ho Yan
Chan Fong Yee	Chan Ngai Tung Mathem	Chan Wing Keung	Chen Jing Hang	Cheung Ho Yiu	Chiang Ting Yi	Chow Choi Luen	Chung Chor Yan	Fung Hoi Yin
Chan Fung	Chan Oi Chi Nicole	Chan Wing Lok	Chen Jung Wei	Cheung Hoi Keung	Chick Kwan Ho	Chow Chung Yan	Chung Chun Fuk	Fung Ka Leung
Chan Fung Har	Chan Oi Ling Jessica	Chan Wing Lok	Chen Li Ling	Cheung Hoi Ki	Chik Cham Yuen	Chow Fung Yan	Chung Chun Hei	Fung Ka Leung
Chan Fung Ping	Chan Oi Ming	Chan Wing Man	Chen Li	Cheung Hoi Yan Virginia	Ching Kwok Wai	Chow Hoi Kit	Chung Ho Fai	
Chan Gim Kam	Chan Oi Mui	Chan Wing Ngan	Chen Ming	Cheung Hoi Ying Hayley	Ching Chun Ha	Chow Jacqueline	Chung Hoi Lung	

Fung Ka Man	Ho Yuet Yue Jovean	King Tracy T C	Lai Ho Sang	Lam Sui On	Law Miui Chi	Leung Lai Yee	Li Hong Ting	Lo Wing Kong
Fung Ka Man	Ho Yuk Kuen Rita	Ko Tsz Leong	Lai Ho Yin	Lam Suk Ching	Law Oi Ngor	Leung Ping Hung	Li Ka Wai	Lo Wing Kum
Fung King Wai	Ho Yuk Lin	Ko Ho To	Lai How Cho	Lam Suk Chung	Law See Ngar Briget	Leung Albert	Li Kam Fai	Lo Yin Ping
Fung Kwok Chi	Ho Yuk Ying Ella	Ko Kwai Lai	Lai Ka Chun	Lam Sze Yin Roger	Law Sek Lun	Leung Cheuk Hang	Li Kam Hei	Lo Ying Yeung
Fung Nga Chung Adrian	Ho Tsun Wai Stella	Ko Phoebe	Lai Ka Lun	Lam Tan Yi	Law Shing Hei	Leung Chi Shing	Li Kam Shing	Lo Yuet Mei
Fung See Ching	Hok Yee Elizabeth	Ko Sze Yan	Lai Ka Man	Lam Wai Chuen	Law Siu Yip	Leung Chi Wai	Li Keli	Lo Yuk Mui
Fung Shui Yin	Hon Ping Phoebe	Ko Tsz Ting	Lai Ka Ming Ben	Lam Wai Chun	Law Wai Cheung	Leung Chi Wai	Li Kim Wai	Loh Wai Chee Teresa
Fung Sin Yee	Hon Miui Chu	Ko Wing Yan	Lai Kwai Choi	Lam Wai Ki	Law Wai Hing Ivy	Leung ChiFan	Li Kin Fong	Loi Sui Ming
Fung Siu Lan	Hon Ngai	Kok Lien Chui	Lai Kwai Fan	Lam Wai Kuen	Law Wai Ming	Leung Ching Yee	Li Kin Keung	Lok Choi Yin Joanna
Fung Tsun Wai	Hong Peize	Kong Fu Wing	Lai Kwan Hon	Lam Wai Leung	Law Wai Ping Reney	Leung Chui Chun	Li Kit Ling	Lok Mei Yee Rosana
Fung Wai Hoo	Hong Ping Cheung	Kong Chon Hei	Lai Man Ling	Lam Wai Lin	Law Wing Yuk	Leung Chui San Anthea	Li Man	Lok Siu Man
Fung Wai Ling	Hou Ngan Ling	Kong Fei Hong	Lai Man Sing	Lam Wai Sin	Law Yakei Godwin	Leung Choi Wah	Li Mei Yuk	Loke Ka Kin
Fung Yan Loon	Hsu Chi Yung	Kong Ling	Lai Mei Fung	Lam Wai Yan	Law Yee Ha	Leung Chun Sing	Li Miao Na	Looi Ming Fung
Fung Yin Kuen Kate	Hsu Pao Hua	Kong Po Kuen	Lai Mei Lan	Lam Wing Sang	Law Yik To	Leung Chun Wai	Li Ping Yu	Lor Wan Fung
Fung Yuet Ngo	Hsu Shun Yan	Koo Ka Yuk	Lai Mei Wai	Lam Wing Yi	Law Yim Ping	Leung Chun Wai	Li Po Chu P Cooper	Low Khing Miang
Fung Yuk Ping	Hu Ying	Koo Ling Kwan	Lai Mei Yuk	Lam Wing Yiu Carina	Law Yiu Hang	Leung Chung Yin Raven	Li Po Ngor	Lu Liu Juan
Gloria & Jacky Chan	Huang Hui Qiang	Koo Yuen Lim	Lai Ming Hei	Lam Yee Man	Lee Man Hin	Leung Fung Choi	Li Pui Chi Christine	Lu Mei Jiao
Go Tin Piu	Huang Nga Ting	Ku Kai Shing	Lai Ming Ho	Lai Yik Kei	Lee Man Ying Medina	Leung Fung Pui	Li Richard Ruiqi	Lu Wen Bin
Gomersall Charles	Huang Ya Yun Annie	Ku Kwun Shan	Lai Ming Ming	Lam Yin Ching	Lee Shuk Fong	Leung Fung Yee	Li Shing Hay	Lui Kit Ping
Gu Xinfeng	Huang Yiu	Ku Wai Fong	Lai Ming Po	Lam Yu Ming	Lee Yuet Sum Connie	Leung Hang Lin	Li Shing Kei	Lui Hak Shun Danny
Ha Ching Man	Hue Tak Wah	Kuan Sut Kei	Lai Nga Shan	Lam Yuen Chun	Lee Chi Kwok	Leung Hin Wing	Li Shun Oi	Lui Hing Zsang
Ha Kit Wa	Huen Fung Man	Kuan Chao Hsin	Lai Pui Ching Alice	Lam Yuen Wai	Lee Chi Wai	Leung Ho Chung	Li Si Hung	Lui Ho Yee
Han Mei Li	Hui Chun Hung	Kuang Xue Ting	Lai Pui Yee	Lam Yuet Ngo	Lee Chui Wa	Leung Ho Yip	Li Sin Man	Lui Lai Yee Aster
Hang Un Tong	Hui Dan	Kung Ka Yi	Lai Shu Kin	Lam Yuet Wan	Lee Chun Ip Martin	Leung Hoi Yu	Li Sin Yu	Lui See Him
Harfitt Alex	Hui Hoi Ying	Kuok Chi Seng	Lai Shuk Ching	Lam Yun Bun	Lee Chun Lok	Leung Ka Chuen	Li Sumei	Lui Tsz Wai
Hau Ching Han Maria	Hui Ka Hung	Kwan Man Ling	Lai Shuk Ha	Lam Ping Chi	Lee Chung Lok	Leung Ka Ming	Li Sze Lam	Lui Wing Kei Monica
Hau Chuen Chun	Hui Kin Kun	Kwan Mei Sai	Lai Shun Han	Lam Sau Lan	Lee Fung Ching Fiona	Leung Ka Wah Kelvin	Li Tsz Lung	Lui Yen Yin Natalie
Hau Yik Ling	Hui Lai Chu	Kwan Chi Keung	Lai Siu Hung	Lam Shuk Kuen	Lee Fung Mei	Leung Kai Kin	Li Tsz Shing Aylwin	Luk Chark Man
He Yong Ye	Hui Man Lai Alice	Kwan Chi Ming	Lai Siu Shan	Lam Suet Yi	Lee Gloria	Leung Kam Ho	Li Wai Fong	Luk Chi Ho
Heung Lai Kuen	Hui Man Na	Kwan Fook Lam	Lai Siu Yin	Lao Chiui Kwan	Lee Hong Chi Henry	Leung Kam Moon	Li Wai Fu	Luk Chung Tim
Hiu King Hang Kenneth	Hui May Wai	Kwan Fu Wing	Lai Sze Wing	Lau Gin Yip	Lee Hiu Ling	Leung Kam Tong	Li Wai Keung	Luk Haw Wan
Ho Pik Lan	Hui Sau Han	Kwan Hoi Ming	Lai Tan	Lau Ling Fai	Lee Hung Ching	Leung Kim Hung	Li Wai Leung	Luk Ka Hing
Ho Sze Wai	Hui Siu Mui	Kwan Hoi Shing	Lai Wai Ching	Lau Mei Lei	Lee Ka Chun	Leung Kin Chun	Li Wai Man	Luk Pak Yu
Ho Wing Yin	Hui Suk Han	Kwan Hop Yee	Lai Wai Kwan	Lau Angela	Lee Ka Lun	Leung King Yuen	Li Wan Ha	Luk Pui Ying
Ho Woon Chi	Hui Tsz Wai	Kwan Ka Yu	Lai Yee Man	Lau Chi Ho	Lee Ka Man	Leung Kit Ching Crystal	Li Wing Jang Cora	Luk Wai Sham
Ho Yuen Ting	Hui TzeFan	Kwan Kwok Chung	Lai Yuen Sze Wendy	Lau Chi Kin	Lee Ka Yan	Leung Kit Ying	Li Wing Lai Kamme	Lui Mei Fung
Ho Avis	Hui Wai Man	Kwan Man Cheuk	Lai Yuk Yue	Lau Chi Wai	Lee Kai Cho	Leung Kwok Chu	Li Wing Lam	Lun Ming Chi
Ho Bik Wa	Hui Wing Keung	Kwan Man Tin	Lam Wing Fai	Lau Chi Yan	Lee Kam Lai	Leung Kwok Wai	Li Xiaqun	Luo Wei
Ho Chau	Hui Wing Nam	Kwan Ming Ki	Lam Chak Wah	Lau Ching Yi	Lee Kam Wing Eric	Leung Kwong Fat	Li Y Hei Rebecca	Lu Winnie
Ho Chi Sing	Hui Yin Yu	Kwan Pui Ming	Lam Chau Hung	Lau Chun Sang	Lee Kin Ben Benny	Leung Lai Lam	Li Yanqiong	Luu The Hung
Ho Chi Tim	Hung Carman	Kwan Sai Man	Lam Chenk Chun	Lau Chun Wa	Lee Kin Chi	Leung Lai Wan	Li Yau Fat	Lwanaga Sachiko
Ho Chin Pang	Hung Chun Kan	Kwan Sau Chun	Lam Cheuk Sing	Lau Chung Yee	Lee Kit Sau	Leung Lai Yung	Li Yewei	Ma Boris
Ho Chui Kwan Joyce	Hung Chun Kan	Kwan SinFan	Lam Chi Him	Lau Doris An Yin	Lee Kit Yee	Leung Lap Gee	Li Yui Fung	Ma Chung Kay
Ho Chun Foon	Hung Chun Yiu	Kwan Wah Ming	Lam Chi Man Alma	Lau Fun Yi	Lee Kit Yuk	Leung Lok Yin	Li Hing Yu	Ma Pui Heung Cindorera
Ho Chun Yin	Hung Ha Ni	Kwan Wai Kit	Lam Chi Pan	Lau Fung Kwan Anita	Lee Kobe	Leung Man Ting	Lilian & Ricky Ho	Ma Wai Ching
Ho Fook Hong	Hung Hui Ming	Kwan Wai Lun	Lam Chi Pun	Lau Hau Man	Lee Koon Ching Angela	Leung Man Wai	Lim Iris	Ma Yee Ping
Ho Hiu Miui	Hung Ka Leong	Kwan Wai Yuen	Lam Chit Wa Shirley	Lau Hui Wah	Lee Kwan Ho	Leung Mei Chun	Limbu Dinesh	Ma Yiu Lan
Ho John Paul Fimalino	Hung Leong	Kwan Wing Cheung	Lam Choi Hung	Lau Ho Yin	Lee Kwan Mau Noris	Leung Mei Chun	Lin Hoi Fai Andy	Ma Chak Wah
Ho Kam Man	Hung Ling Chun	Kwan Yuen Man	Lam Choi Miui	Lau Hon Biu	Lee Lai Kuen	Leung Mei Hung May	Lin Kai Wai	Ma Chun Lung
Ho Kam Ying	Hung Mei Ting	Kwok	Lam Choi Mui	Lau Hon Chung	Lee Lam Chong	Leung Ni Ling	Lin Lianyau	Ma Chun Wai Raymond
Ho Kin Chi	Hung Nga Chun	Kwok Ching Wai	Lam Hung Mui	Lau Hung Mui	Lee Lee	Leung Oi Yiu	Lin Qiaomin	Ma Fan Ching
Ho Kit Ling	Hung Nga Man	Kwok Fuk Wai	Lam Chun Kit	Lau Jacque	Lee Li Wei	Leung Pak Ki	Lin Rui Yi	Ma Hing Wai
Ho Kui Yuen	Hung Po Shan	Kwok Hei Chan	Lam Chun Tung	Lau Ka Hin	Lee Ma Fa	Leung Pik Wan	Lin Tang Tai	Ma Hiu Sheung
Ho Kwai Mui	Hung Sai Biu	Kwok Ka Yuen	Lam Chun Wah	Lau Ka Wai	Lee Ming Ying	Leung Pik Yan Juliana	Lin Ting Wan	Ma Hok Leung
Ho Kwok Mui	Hung Tak Lam	Kwok Ka Yin	Lam Fong Che	Lau King Him	Lee Miui Yee	Leung Po Yin	Ling Chun Po Paul	Ma Mei Lin
Ho Kwok Yan	Hung Wan Sang	Kwok Kam Ming	Lam Fung King	Lau King Him	Lee Mun Yee	Leung Pui Kee	Ling Lai Fong	Ma Ming Ho
Ho Lai Ying Ada	Hung Yam Hei	Kwok Kin Mei	Lam Hai Wai Ivy	Lau Kit Ping Grace	Lee Oi Yee	Leung Pui Ling	Leung Mei Ling	Ma Mui Yuen
Ho Lok To	Hung Yin Ling	Kwok Kit Ying	Lam Hang Ching	Lau Kwok Ho	Lee Pui Chun	Leung Pui Ting	Liu Chau Yau	Ma Shi Yan
Ho Man Chi	Ice Lau	Kwok Kwai Chun	Lam Ho Yi Joyce	Lau Lai Heung	Lee Pui Ling	Leung Shuk Ting	Liu Chin P	Ma Sui Yee
Ho Man Kit	Idy Chan	Kwok Kwai Sum	Lam Hoi Ting	Lau Mei Po Lowen	Lee Pui Yee Billie	Leung Shuk Ting Grace	Liu Chun Ping	Ma Suk Kuen
Ho Man Sze	le Kwai	Kwok Lai Ho	Lam Hoi Yi	Lau Mei Kei May	Lee Pui Yi	Leung Shum Kwong	Liu Dan	Ma Sung Yiu
Ho Man Yee	Ip Chi Siu	Kwok Lai Mei Mandy	Lam In Shan	Lau Mei Ling	Lee Quinncy	Leung Sin Chi Stephen	Liu Ding Ping	Ma Ying Chun
Ho Man Ying	Ip Cheuk Yan	Kwok Lai Ngor	Lam Ka Lai	Lau Mei Wa	Lee Shueung Hung	Leung Sin Chiu	Liu Hoi Man	Ma Yuen Yan
Ho Mau Wah	Ip Chi Fung	Kwok Lai Ping	Lam Ka Lee	Lau Mo Ching	Lee Shu Wing Alex	Leung Sin Yi	Liu Jiarong	Mai Xing Ying
Ho Mei Ling	Ip Chi Kit	Kwok Ling Ling	Lam Ka Yuen	Lau Po Yi	Lee Shui Lam	Leung Siu Wah	Liu Lai Ling	Mak Chuen Wah
Ho Ming Cheung	Ip Ka Chun	Kwok Man Yee Alice	Lam Ka Wong	Lau Sai Mui	Lee ShukFan	Leung Siu Wing Raymond	Liu Lap Hang	Mak Ho Yin
Ho Ming Chun	Ip Kin Yan	Kwok Maxwell	Lam Kai Kwong Louis	Lau Sau Ping	Lee Siu Kei	Leung Suet Yee	Liu Ling Sheung Helen	Mak Ka Kin
Ho Ming Lok	Ip King Shing	Kwok Ming Hing	Lam Kin Ming	Lau Shing Pan	Lee Siu Man	Leung Sui Chung	Liu Peter	Mak Kam Yuk Connie
Ho Ngai Fung	Ip Kwok Chu	Kwok Oi Tak	Lam Kin Wing	Lau Siu Kwan	Lee Siu Tip Christine	Leung Suk Na	Liu Pik Shan	Mak Kin Ling Irene
Ho Po Chi	Ip Sham	Kwok Po Sang	Lam Kwok Ping	Lau Siu Man Lydia	Lee Siu Ying	Leung Suk Ping Irene	Liu Pui Shun Winnie	Mak Kwan Wai Ida
Ho Po Kuen	Ip Siu Hing	Kwok Pui Kiu	Lam Kwong Cheong	Lau Siu Mei May	Lee Suk Yee	Leung SukFan	Liu Shi Keung	Mak Lai Ping
Ho Pui Har	Ip Suzanne	Kwok Pui Yee	Lam Kwong Choi	Lau Siu Wah	Lee Tai Hung Jame Fifsar	Leung Sun Chi	Liu Siu Ching Teresa	Mak Lin Ying
Ho Pui Tsing	Ip Tik Laam	Kwok Pui Yee	Lam Lai Ling Cary	Lau Siu Wing Desmond	Lee Tak Man Gary	Leung Ting Yee	Liu Yang Chun	Mak Mei Yee
Ho See Chung	Ip Wai Tung	Kwok Sau Lan Nancy	Lam Lai Ying	Lau Suk Kam	Lee Timmy Y	Leung Wai Chi	Liu Yin Hung	Mak Moon Fai
Ho Shiu Leung	Ip Wun Cheung Ashley	Kwok Siu Ping	Lam Lee	Lau Tui Ying	Lee Tung Mui Chan May	Leung Wai Hung	Liu Yuen Fun	Mak Mun Chung
Ho Shui Tak Martin	Irene Tang	Kwok Sum Sit	Lam Ling Ling	Lau Tsz Mei	Lee Wai Han	Leung Wai Hung	Lo Chi Keung	Mak Nai Sum
Ho Shun Kai	Iu Kai Hoo Paul	Kwok Sze Man	Lam Linna	Lau Wai Ling	Lee Wai Man Galaxy	Leung Wai Kai	Lo Bo Chi Mandy	Mak Pak Chun
Ho Sin Han	Iu May	Kwok Tak Yan	Lam Man Ho	Lau Wai Man	Lee Wan Suen	Leung Wai Ki	Lo Catherine	Mak Sai Mui Pully
Ho So Han	Iu Sau Ying	Kwok Tsz Kit	Lam Ming Ka Fiona	Lau Wai Mui Candy	Lee Wing Chi	Leung Wai Man	Lo Cheuk Hong	Mak Sai Wai
Ho Suet Ming	Jiang Pei Sheng	Kwok Wai Ling	Lam Ming Yip	Lau Woon Fat	Lee Wing Ho	Leung Wai Sze	Lo Ivy	Mak Shea On
Ho Sze Man Doris	Jiu Man Fung	Kwok Wing Kin	Lam Mui	Lau Yee Lok	Lee Wing Kam Virginia	Leung Wai Ting	Lo Kam Chiu Kevin	Mak Si Wan
Ho Sze Wai Brenda	Kae Ho Yin	Kwok Wing Yan	Lam Nam Wai	Lau Yeuk Lam	Lee Wing Lai	Leung Wai Yee Burronica	Lo Kei Hung	Mak Wai Lung
Ho Tak Sum	Kam Ka Ming	Kwok Yam Tat Jeremy	Lam Ngai Ling Kiyoko	Lau Yin Ling	Lee Wing Man	Leung Wai Yin Phoebe	Lo Kit Kit	Mak Wing Shan
Ho Tsz Ling	Kam Ngan Lei	Kwok Yan	Lam Ngan Yin	Lau Yuet Li Panny	Lee Woon Kit	Leung Woon Kit	Lo Kwok Kit	Mak Kin Chung Markie
Ho Tsz Ying	Kam Wing-Chong	Kwok Yuk Ming	Lam On Yue	Lau Yuk Lin	Lee Yan Sing	Leung Wing San	Lo Lai Lai	Man Ka Wai
Ho Wai Chu Jennifer	Kam Yan Ho	Kwong Beatrice	Lam Pik Ki	Lau Yuk Yee	Lee Yat Long	Leung Yee Tung	Lo Lai Wa Rita	Man Mei Hing
Ho Wai Hung	Kam Yan Shing	Kwong Chuen Tai	Lam Ping Kwan Watson	Law Choi Han	Lee Yee San Eva	Leung Yung Lee	Lo Lok Fung	Man Shu Shing
Ho Wai Shan	Kam Yuk Fai	Kwong Ka Yan	Lam Po Fong	Law Wai Lit	Lee Yeok Mui	Leung Yiu Chung Eric	Lo Mee Lan Shirley	Man Wing Sum
Ho Wai Ying	Kan Kwok Hong	Kwong Lai Chu	Lam Pui Fong	Law Cheung Hung	Lee Yeuk Lan	Leung Yuen Ping	Lo Mei Lai	Manganawe Joane A
Ho Wan Man Melody	Kan Ka Lai	Kwong Lai Sheung	Lam Sau Ching Marian	Law Chi Hoi	Lee Yin Leung	Leung Yuen Shing	Lo Mei Yee	May & Kevin Lo
Ho Wing Kei	Kan Kwok On	Kwong Miui Ying	Lam Sau Han	Law Choi Kwan	Lee Ying Pui	Leung Yui Chung Ching	Lo Ming Chu	Michelle & Danny Tang
Ho Wing Kum	Kan Wai Yee	Kwong Shui Ngan	Lam Sau Lin	Law Chun Ngai Paul	Lee Yui Kwok	Li Choi Fung	Lo Nok Yan	Mo Man Wai
Ho Woon Ming	Kang Ruo Lin	Kwong Ting Fung Alex	Lam Sau Wing	Law Chung Yee	Lee Yui Ming	Li Chau Ping Mona	Lo Oi Yee	Mo Mei Yuk
Ho Yeuk Mui	Ke Jiawen	Kwong Yuen Ngor	Lam Sheung Yu	Law Hok Yin	Lee Yu Kei	Li Chi Ho	Lo Pui Man	Mok Fung Ling
Ho Yiu Cheung	Kei Chak Nam Tydan	Lai Yan Wah David	Lam Shing Lung	Law Hon Wing Henry	Lee Yui Ching	Li Chi Yan	Lo Pui Sze	Mok Lai Him
Ho Yiu Fei	Kennedy Robin Mark	Lai Chan Ball	Lam Sin Cheung	Law Kin Pong	Lei Wai Kun	Li Ching	Lo Shui Leung	Mok Pok Yin
Ho Yiu Lun	Keong Cheng Cheng	Lai Cheuk Wang Franki	Lam Siu Kuen Conty	Law Kwong	Lei Hui Wan	Li Chun Wa	Lo Siu Yin	Mok Shuk Fong
Ho Yiu Chau	Keung Fook Ho Janny	Lai Chi Hang	Lam Siu Lam	Law Look Tend	Lei Ka Pek	Li Fui Hing	Lo To Lee Kwan	Mok Sin Ting
	Keung Hok Ching	Lai Chi Man Edmund	Lam Siu Ling	Lam Man Kit	Lei Mei Ha	Li Fung Hing	Lo Mei Wei	Mok Wai Hung
	Kho Siu Lui	Lai Chun	Lam Siu Yuk Jade	Law Man Tung	Leng Wing Hong Michael	Li Ho Wah	Lo Wai Kong	Mok Wing Lam
	Khoo Key Ming	Lai Chun Bun Michael	Lam Stephen	Law Mei Ting	Leung Chio Wan	Li Ho Yan	Lo Wai San	Mok Wing San
	King Pearl	Lai Chun Wai	Lam Suet Ling	Law Mei Yi	Leung Ho Tat	Li Hong Mei	Lo Wai Yee Annie	Mok Yuen Kay



Mr. & Mrs. Donald Cho	Pak Sui Shan	So Hung Sue	Tang Wing Sze	Tsui Chi Keung	Wong Ka Pun	Wong Wan Choi	Yee Chung Man	Yu Lok Yuen
Mr. & Mrs. Kwok Chi Ming	Pan Yu Ying	So Ka Ming	Tang Yu Ki	Tsui Chi Sing	Wong Ka Wai	Wong Wan To	Yee Shing Hung	Yu Lun Ping
Mr. & Mrs. Lo Man Hong	Pan Fung Yi	So Kin	Tang Yuet Chun	Tsui Chun Wa	Wong Ka Yi	Wong Wen Lan	Yeh San Ju	Yu Man Hei
Mr. & Mrs. Yeung Wai Suen Wilson	Pan Qiao Yun	So Kit Li Florance	Tang Yuk Chun	Tsui Hiu Wai Isabella	Wong Ka Yin	Wong Wing Fai	Yeo Suk Khoon	Yu Man Man Ariel
Mr. & Mrs. Yuen Kwok Chu	Pang Cho Yi	So Lai Man Brandy	Tang Yuk Ling	Tsui Ho Lan	Wong Kai Cho	Wong Wing Hang Dominic	Yeung Chak Ming	Yu Nga Fong
Mung Ho Nam	Pang Chun Lui Reginald	So Lam	Tang Yuk Ling	Tsui Hon Ting	Wong Kai Sing	Wong Wing Hei	Yeung Chi Fai	Yu Pik Kiu
Neo Annie	Pang Chan Suk Wan	So Man Yi	Tang Yuk Sheung	Tsui Ka Yi	Wong Kam Fai	Wong Wing Hin	Yeung Chi Lun	Yu Shing Ha
Ng Ho Lam Jonathan	Pang Chi Keung	So Ming Wai	Tang Kit Yee	Tsui Kwai Ming	Wong Kam Kuen	Wong Wing Ho	Yeung Choi Ling	Yu Sui Wai
Ng Hoi Ling	Pang Chi Sing Peter	So Mui	Tang Lai Wah	Tsui Lai Wun	Wong Kin Wai	Wong Wing Hon	Yeung Chung Chuen	Yu Sum Ning
Ng Oi Wah	Pang Ching Ping	So Sau Fong	Tay Keng Puang	Tsui Nang Ping	Wong Kin Wing	Wong Wing Ka	Yeung Fung Chee	Yu Sze Wai
Ng Siu Wai	Pang Ching Yeung Wesley	So Shui Wah	Ten Lie Ha	Tsui Shiu Ping Sara	Wong Kit Ki Jacqueline	Wong Wing Keung	Yeung Fung Ming	Yu Tsui Har
Ng Tsz Kwan	Pang Chit Wa	So Siu Mei	Teon Mee Eng	Tsui Shuk Ki	Wong Kit Ling	Wong Wing Shan	Yeung Fung Yee	Yu Tsz Yiu
Ng Alvin	Pang Hong Ni	So Wai Kei	Teresa & Denny Yu	Tsui Tsz Kin Ernest	Wong Koon Wah	Wong Wing Sze	Yeung Hin Wai	Yu Wai Man Carol
Ng Betty	Pang Kin Long	So Wai Lun Alan	Tin Winnie Wing Yan	Tsui Wai On Simon	Wong Kwai Leung	Wong Wing Tung	Yeung Hiu Yat	Yu Yeung Chung
Ng Cecilia	Pang Kwok Ho Norton	So Wai Wa	Ting Kitty	Tsui Wan Hing	Wong Kwai Lin	Wong Wing Wah	Yeung Hoi Lam	Yu Yuen Ting Erica
Ng Cheuk Ting Eunice	Pang Lok Sze	So Yuet King	Ting Kwok Yin	Tsui Wang	Wong Kwan Wah	Wong Wing Yan	Yeung Hoi Sing	Yue Yat Sing
Ng Chi Fuk	Pang Nga Lun	Soo Wai Kiu	Ting Lee	Tsui Wing Yee	Wong Kwan Yin	Wong Wing Yau	Yeung Ka Yee	Yuen Janja
Ng Chi Kwan	Pang Sing Fai	Soo Yiu Ming	To Che Hoo	Tsui Yuk Fung	Wong Kwok Angelica	Wong Wing Yu	Yeung Kam Sheung	Yuen Shok Yin
Ng Ching	Pang Siu Yin Sui	Sophia & Paulus Poon	To Chi Ling	Tsui Yuk Lin	Wong Kwok Chun	Wong Wing Yu	Yeung King	Yuen Shui Luen
Ng Choi Ha	Pang So Hing	Soon Siu Yeung	To Chin Wing Phoebe	Tuen Lai King	Wong Kwok Wai Benny	Wong Yat Cheung	Yeung Kit Ying	Yuen Chun Pong
Ng Choy Har	Pang Wai Lun	Sou Lai Hong	To Chui Ping	Tuen Man Piu	Wong Kwok Ying	Wong Yat Yau	Yeung Kwan Yung	Yuen Ho Yung
Ng Chuck Ping	Pang Yin Ping Esther	Stella Yu	To Kai Tung	Tuen Tat Ming	Wong Kwok Yu	Wong Yau	Yeung Lo	Yuen Hoi Luen Dorothy
Ng Chun Lung	Pat Wing Sze	Suen Kam Shing	To Kuen	Tung Kit Ching	Wong Kwong Pik	Wong Yee Chun Andrew	Yeung Lok Ki	Yuen Ka Kui
Ng Chun Yung	Pau Chun Wah	Suen Mei Yan Eve	To Lai Ting	Tung CY Keith	Wong Lai Chan Maria	Wong Yee Ha	Wong Yee Ha	Yuen Ka Lam
Ng Chung Yin	Pau Yuk Yee	Suen Ping	To Oi Yung	Tung Yuet Wah	Wong Lai Har Clair	Wong Yee Tak Eddie	Yeung Mei Po	Yuen Kar Hang Bella
Ng Fai Man	Peng Anying	Suen Tsz Hang	To Pik Yu	Tung Yui Hung	Wong Lai Hing	Wong Yee Ting	Yeung Ming	Yuen King Kiu
Ng Ha Man	Po Sai Man	Suen Tsz Yin	To Siu Mei	Tze Wai Kin	Wong Lai Hung	Wong Yee Tsun Amy	Yeung On Leung Thomas	Yuen Lai Fong
Ng Hoi Kiu Cherry	Po Fong Yu	Sum Mei Lin	Tong Li Kuen	Unchalee Sae Heng	Wong Lai Kwan Vicky	Wong Yee Wa	Yeung Ping Fun	Yuen Lik Kan
Ng Hoi Yan	Pong Si Long	Sun Man Yu	Tong Sau Ching	Wai Janet	Wong Lai Man	Wong Yeuk See Alice	Yeung Ping Sang	Yuen Mang Yan Virginia
Ng Hoi Yin	Poon Fong Tung	Sun Mona	Tong Su Tak	Wai Siu Chin Sophia	Wong Lai Man	Wong Yin Yi	Yeung Pui Shan	Yuen Mei Ki Maggie
Ng Hon Ching	Poon Kai Kin	Sun Tan Fu	Tong Hoi Ki	Wan Wai Man Vivian	Wong Lai Ming	Wong Ying Ping	Yeung Sau Ha Sarah	Yuen Miu Han
Ng Hon Chung	Poon Bik Shan	Sun Ying Ho	Tong Ka Chun Calvin	Wan Ching Choi	Wong Lai Shan	Wong Yip Kwai Kenny	Yeung Sau Kum	Yuen Pui Shan
Ng Kai Fung	Poon Chun Man	Sung Wai Chun	Tong Ka Hei	Wan Ching	Wong Lai Yee	Wong Yip Ping	Yeung Shan Shan	Yuen Pui Shan
Ng Kai Lam	Poon Kwok Leung	Sze Hiu Sang	Tong Ka Keung	Wan Man Keung	Wong Lai Yu	Wong Yu Ching	Yeung Sheung Chun	Yuen Pui Yan Desiree
Ng Kar Wah	Poon Kwok Shek	Sze Lai Lin	Tong Ka Man Oscar	Wan Man Tim	Wong Lin Fong	Wong Yu Ho	Yeung Sze Yee	Yuen Sau Chun Jennifer
Ng Kin Fong	Poon Pak Keung	Sze Pandora	Tong Lee Chong	Wan Pik Keung	Wong Lin Ping	Wong Yuen Fong	Yeung Tong Man	Yuen Siu Hung
Ng Kin Yan	Poon Pik Kei	Sze Siu Pang	Tong Po Shun	Wan Ping Hung	Wong Ling Chuen	Wong Yuen Man	Yeung Wai Bun	Yuen Suk Han
Ng King Ping	Poon Po Chu	Tai Pui Wai	Tong Suk Han	Wan Sai Cheong	Wong Lui	Wong Yuen Wa	Yeung Wing Ting Shirley	Yuen Wai Pang
Ng King Sheung	Poon Po Keung	Tai Che Tin	Tong Yun Yan	Wan Sin Yuk Judy	Wong Man Hon	Wong Yuet Chui Florence	Yeung Yim Wai Mandy	Yuen Wai Yui Annie
Ng Kit Ping Esther	Poon Pui Wai	Tai Kam Ming	Tong Yiu Ming	Wan Wing Pui	Wong Man Hung	Wong Yuet Shan Sandy	Yeung Ying Hung	Yuen Yee Tung
Ng Kwok Hon	Poon Pui Yee	Tai Lui	Tsang Yuen Ying	Wan Wong Yuk Ha	Wong Man Yee	Wong Yuk Lam Johnny	Yeung Yuen Ching	Yui Yi Ki
Ng Lai Chuen	Poon Shuk Ching	Tai Po Yin	Tsang Chuk Choi-yin	Wan Yeuk Hang	Wong Man Yee	Wong Yuk Lan	Yeung YuenFan	Yung Chung Yan
Ng Lai Yin	Poon Siu Chung	Tai Sik Lau	Tsang Chun Kau	Wan Yuk Fong	Wong Mei Ha	Wong Yuk Ping	Yeung Ngai Pan	Yung Eddy
Ng Pak Hei	Poon Sui Sheung	Taluban Christina	Tsang Fai Lung	Wang Wai Chi	Wong Mei Ying	Wong Yuk Ying	Yeung Pik Lin	Yung Hin Tat Kenneth
Ng Ping Kwan	Poon Wai Lin	Tam Chi Chung	Tsang Fung Mei	Wang Jing	Wong Mei Yuk	Wong Yun Hei	Yi Hui Qun	Yung Kai Pang
Ng Ping Tai	Poon Wing Keung	Tam Man Yee	Tsang Hon Kit	Wang Qi	Wong Ming Wai	Woo Ka Po	Yi Ling	Yung King
Ng Po Shun	Poon Yim Mei	Tam Mei Sim	Tsang Ka Fat Kaiser	Wang Tak Chiu	Wong Nam Kam	Woo Mong Wo	Yick Kin Tsang	Yung Kwok Kin
Ng See Yin Catherine	Pui Kwong Lan	Tam Chi Chung	Tsang Ka Wai	Wang Yuk Wah	Wong Nam Kam	Woo Siu Fai	Yick Wing King	Yung Wai Yan
Ng Shuk Lai	Pun Chi Tung	Tam Chi Kong	Tsang Kim Yu	Wat William	Wong Ngan Fung	Woo Siu Fai	Yick Wing Man	Yung Yiu Cho
Ng Sin Ting Leona	Pun Kong Shun	Tam Chui Chu	Tsang Kin Ming	Watt Po Kau	Wong Oi Ha	Wu Chi Kuen	Yik Hoi Lun William	Yung Yuk Sim Backey
Ng Siu Kuen	Pun Shuk Woon Stella	Tam Chun Wing	Tsang Kin Ming	Weng Joyce	Wong Pik Ki	Wu Ching Yee	Yip Hon Sin	Yuo Po Lan
Ng Siu Kwan	Pun Wai Shu Esther	Tam Ho Fai David	Tsang Kit Ming	Wenn Yin Kun Joyce	Wong Po Chun	Wu Chun Cheong	Yim Gladys	Zeng Xiao Yuan
Ng Tse Man	Ruby & CY Chan	Tam Hon Wah	Tsang Kwan Fung Isabelle	Wong Chun	Wong Po Yi Polly	Wu Chun Hung	Yim Ka Kin	Zhang Chao Lian
Ng Tsui Ha	See Yun Ning	Tam Hung Kwong	Tsang Kwok Keung	Wong Chun	Wong Pok Hei	Wu Hoi Shan	Yu Kai Ling	Zhang Lu Yue
Ng Un I	Sha Chi Wah	Tam Ka Leung	Tsang Lai Ling	Wong Man Sze	Wong Man Sze	Wu Jiatong	Yim King Man	Zhang Min
Ng Wai Hong	Sham Siu Yin	Tam Kam Fung	Tsang Lai Yi, April	Wong Mei Chun	Wong Mei Chun	Wu Ka Hing	Yim Mei Po	Zhao Ke Ying
Ng Wai Kam	Sham Wan Seung	Tam Kay Hing Raymond	Tsang Lee Woon Lui	Wong Mei Yin	Wong Sammy	Wu Kin Fai	Yim Pui Kwan	Zhao Keying Lorraine
Ng Wai Kim	Shaw Mei Kwan	Tam Kin Yan	Tsang Mung Ling	Wong Seung Kuen	Wong Sau Kuen	Wu Kong Man	Ying Hoi Lam	Zhong Kaihui
Ng WaiFan	She Wing Fai	Tam Kin Yan Felice	Tsang Pit Wai Leo	Wong Siu Cheung	Wong SauFan	Wu Lai Yu Pamela	Ying Sin Ying	Zhou Hang
Ng Wing Kai Walter	Sheh Si Fong	Tam Lai Shun	Tsang Pui Wai	Wong Siu Kwan	Wong Seung Wah	Wu May Yung	Yip Hui Tung	Zoe Ip
Ng Wing Kuen	Shek Heng Chong Anthony	Tam Lam	Tsang Pui Yee	Wong Cheuk Man	Wong Sheung	Wu Nan Nan	Yip Ka Man	歐家儀
Ng Wing Kwong	Shek Kam Ming	Tam Mee Yun	Tsang Shing Pun	Wong Chi Hang	Wong Shu Ting	Wu Po Ping	Yip Chi Ming	周冬妮
Ng Wing Yung	Shek Lai Yee	Tam Nim Chung	Tsang Sik Man	Wong Chi Kai	Wong Shui Leung	Wu Qing	Yip Hing Ling	周綺君
Ng Wing Yin	Shen Sui Chi	Tam Nok Hei	Tsang Tsz Kin	Wong Chi Kin	Wong Shui Man	Wu Shuo Jung Serena	Yip Ka Ho	鄭慈音
Ng Woon Yee	Shen Xiu Ping	Tam Sai Ching	Tsang Tsz Kin	Wong Chi Kuen	Wong Shuk Lam	Wu Siu Hung	Yip Kam Loong	張家慧
Ng Yan Tai	Shih Elexa Yin	Tam Shui Keung	Tsang Wai Chun	Wong Chi Kuen	Wong Shuk Ying	Wu Tak Ming	Yip Kit Hong	張穎佩
Ng Yee Ki	Shih Wing Ching	Tam Sin Yi	Tsang Wai Lan	Wong Chi Ming	Wong Shun Wai	Wu Yuen Tak	Yip Kwai Chun	巢悅天
Ng Yeuk Ying	Shing Hiu Fung	Tam Sui Pong	Tsang Wai Ling Simon	Wong Chi Tai	Wong Sin Yi	Wu Yuk Ha	Yip Kwok Kwong	巢樂培
Ng Yik Lun	Shirley Lau	Tam Suk Yin Rachel	Tsang Wai Ming	Wong Chi Yi	Wong Siu Keung	Wu Yuk Hing	Yip Mei Mei May	朱麗芬
Ng Yim To Cindy	Shu Tianchu	Tam Wing Lee	Tsang Wing Keung	Wong Ching Chuen	Wong Siu Ling	Wu Yuk Kwai	Yip Mo King	樊天宸
Ng Yip Choi	Shum Ka Ling	Tam Ying Kit	Tsang Wing Shing	Wong Ching Hin	Wong Siu Lun	Wun Sau Ying	Yip Ngo Seung	利婉嫻
Ng Yu Wo	Shum Pui Lan	Tam Yuen Chin	Tsang Yee Pang	Wong Ching Wah	Wong Siu Man	Xu Bo	Yip San Kiu	岑潤萍
Ng Yuen Ki Cynthia	Si Chan Yu Kee	Tam Yuk Kam Irene	Tsang Yuk Choi	Wong Cho Shing	Wong Siu On	Xu Chao Yao	Yip Tin Yuen	屈志楷
Ng Yuen Man	Sim Yuen Kei	Tan Wai Chin	Tsang Yuk Kuen	Wong Cho Yee	Wong Sui Yin Chloe	Xu FengQin	Yip Wai Hung	黃名頌
Ng Yuet Ming	Sin King Yee	Tan Choi Lian Molly	Tsing Yee Hung	Wong Chui Hung	Wong Suk Wan	Xu Jin Feng	Yip Wai Hung	黃美娟
Ng Yuk Chu	Sin Koon Ying	Tan Yei Ling	Tse Hung Un	Wong Chui Yan	Wong Sze Man	Xu Yuan Hao	Yip Wai Keung Ben	楊彩雲
Ng Yun Wing	Sin Kwok Yim	Tang Chak Yin	Tse Mei Yuk Barbara	Wong Chun Chun	Wong Sze Wai	Xu Zhenbo	Yip Wan Fuk	姚寶璇
Ngai Allie	Sin Lam Yuk	Tang Chi Kwan Ellen	Tse Wing Ki	Wong Chung Chung	Wong Tung Sio Leng	Xu Zi Jun	Yip Wing Cheung	
Ngai Hung Ngan	Sin Ting Cheong	Tang Hing Chan	Tse Chi Chung	Wong Chun Shing	Wong Tat Hei	Xu Zi Ying	Yiu Suk Chu	
Ngai Kit Mui	Sin Wai Man	Tang In Chan	Tse Chi Man	Wong Chun To	Wong Tin Wah	Yam Chin Yan	Yiu Hui Wa	
Ngai Mei Kei	Sin Wing Han	Tang Jin Xiao	Tse Chun Kwong	Wong Chun Wa	Wong Ting	Yam Ping Hung	Yiu Han Hung	
Ngai On Na	Sin Yuen Har	Tang Kam Ming	Tse Chun Yu	Wong Chung Sze	Wong Wai Chun	Yam Wing Kit	Yiu Ting Ting	
Ngai Pei Ye Pet	Singh Sukhdeep	Tang Karen	Tse Hon Chi	Wong Emily	Wong Wai Kai	Yan Chong Sun	Yiu Wing Kei	
Ngai Po Ching	Sirirat Sairojpany	Tang Kim Hung	Tse Ka Wah	Wong Eunice	Wong Wai Kai Paul	Yin Ding On	Yiu Yui Lai	
Ngai Pui Ki Fiona	Sit Hau Yee Karen	Tang Kwong Hung	Tse Lai Po	Wong Fung Chun	Wong Wai King	Yan Tsz Yau	Young Paul	
Ngai Sau Lai	Sit Wai Keung	Tang Kwong Yuen	Tse Leung Chi	Wong Hay Yau Victor	Wong Wai Kuan	Yan Wai Hon	Yu Chi Kan	
Ngai Wai Ping Pinky	Siu Cheuk Yin	Tang Mei Kuen Maggie	Tse Man Wang	Wong Hoi Chu	Wong Wai Kuen	Yang Chu Tin	Yu Chi Man	
Ngai Wai Yuen	Siu Ka Ying	Tang Nai Wing	Tse Man Yiu	Wong Hui Kwan	Wong Wai Lan	Yang Pik Yin	Yu Chun Lung	
Ngai Yu Pui See	Siu Kwok Hing	Tang Pik Ki	Tse Pik Chu	Wong Ho Fai	Wong Wai Ling	Yang Yaning	Yu Chun Wah	
Ngan Hoi Yan	Siu Pui Ying	Tang Pik Lam Cathy	Tsing Fung Fai	Wong Ho Kwan	Wong Wai Lun Allen	Yang Lan	Yu Chun Wah	
Ngan Kit Yee Carrie	Siu Siu Fong	Tang Po Yin	Tse Shuk Ching	Wong Ho Ting	Wong Wai Man	Yao Kar Shui	Yu Chung Man	
Ngan Lee Linda	Siu Wai Luk Wagner	Tang Pui Yan Grace	Tse Siu Cho	Wong Hoi Chu	Wong Wai Man	Yap Wai Kwong	Yu Ho Yin	
Ngan Man Fong	Siu Yin Yee	Tang Sai Mui	Tse Tak Lin	Wong Hok Leung	Wong Wai Mei	Yip Ching Ching	Yu Hoi Lun	
Ngan Mei Yu	Siu Yiu Wai	Tang Sam Lok	Tsen Ngun Roxana	Wong Hon Wang	Wong Wai Ping	Yau Chun Yan	Yu Hoi Wing	
Ngan Sik Chung	Siu Yuk Bui	Tang Sau Pik Karana	Tso Chun Wai	Wong Ion Wa	Wong Wai Pong	Yau Ka Shing	Yu Hoi Yan	
Ngan Wai Yin	So	Tang Siu Lin	Tso Yuk Chuen	Wong Lo Ho	Wong Wai Sheung	Yau Lai Kuen	Yu Hung Chin	
Ngo Wai Chung Anthony	So Bo Ling	Tang Suk Lin	Tsoi Tse Wai	Wong Ka Ki	Wong Wai Tsz	Yau Pik Sang	Yu Ka Yee	
Ni Xue Qine	So Hoi Wing	Tang Tai Chi	Tsoi Wang Kwong	Wong Ka Lai	Wong Wai Wo	Yau Pui Chi	Yu Kong Fai	
Nip Kuen Sheung	So Bik Chu	Tang Tsz Leung	Tsoi Chau Yuet	Wong Ka Lai Carrie	Wong Wai Yan	Yau Siu Fong	Yu Lai Fong Winnie	
Or Lai Wa	So Chi Kwong	Tang Wai Kei	Tsoi Wing Pui	Wong Ka Lok	Wong Wai Yee	Yau Wai Fong	Yu Lai Hung	
Paaui Yuk Mui	So Chi Wai	Tang Wai Keung	Tsoi Yin Fung	Wong Ka Man	Wong Wai Yee	Yau Yiu Wa Ricky	Yu Lai King	
Pak Cheung Fai	So Goodwin L.	Tang Wai Mei	Tsu Yun Sang	Wong Ka Man	Wong Wai Yin	Yu Yuen Ling	Yu Lee Ping	

# HOPE worldwide Precious Link Center



## Service users

Those living in Sham Shui Po district aged 60 or above with financial needs

## Service items

- Free meal distribution
- Rehabilitation service
- Hospital escort
- Mental training
- Dental care
- Fall prevention examination and follow up



Your donation means a great deal to the beneficiaries.  
Regular or particular donation through one of the following ways is welcome.



(Cheque payable to "HOPE worldwide", please send to HOPE worldwide office in Shek Kip Mei.)



(Please call HOPE worldwide for the application form.)



Merchant code of  
HOPE worldwide Limited: 9256



Deposit into  
HOPE worldwide  
bank account

(HSBC 024-134090-003 or  
Bank of China 012-925-0-001839-8)



HOPE worldwide F2F  
Fundraising Team

**HOPE**  
worldwide  
寰宇希望

✉ 1-6A, G/F, Tung Fai House, Tai Hang Tung Estate, Shek Kip Mei, Kowloon, Hong Kong

☎ (852) 2588 1291

🌐 [www.hopeww.org.hk](http://www.hopeww.org.hk)

☎ (852) 2588 1306

f [HOPEwwHK](https://www.facebook.com/HOPEwwHK) 🔍