



The Power of Experiencing Hope



HOPE
worldwide
寰宇希望

Bringing hope,
changing lives



Dear Friends,

Hope is a powerful emotion. It gives you the strength to look up, take another step and persevere through tough times. With hope you sit a little straighter, stand a little taller and walk with greater purpose.

That's what so many of you gave to the people we are helping - the power of experiencing hope. Here are a few brief highlights:

- 1 Over 2,000 volunteers served the elderly on our Volunteers for Seniors Day on the coldest day in Hong Kong in 60 years - just 3 degrees!
- 2 Our friend Steve Chan, a well-known diving coach in Hong Kong, persevered for six months and walked the Appalachian Trail in the USA, raising over HK\$180,000 for our Elderly Fall Prevention Programme.
- 3 Sixty volunteers taught English in Huining, Gansu Province.
- 4 Over seven hundred of you joined us on Flag Day to support the Centre for Kids in Shek Kip Mei.
- 5 Our Ambassador Mr. Cheung Man-sun, his wife Candy Chea, and friends joined our Good Trekker, climbing over 4,000 meters above sea level to raise money for underprivileged children in China.

- 6 Over 800 runners took part in the annual Great Santa Run.
- 7 Two private funders donated over HK\$2 million to help us start two social enterprise dental clinics to serve the community, especially needy seniors.

This list cannot possibly tell the whole story of what so many of you did to help us accomplish our mission in 2016. You entrusted us with your time, energy, and money in the hope of changing someone's life. We are confident that as you read through this report, you will see the collective difference you made and feel proud of all that you have done to give the poor in China and Hong Kong the power of experiencing hope.

Thank you.

Country Director

2016
ANNUAL
REPORT

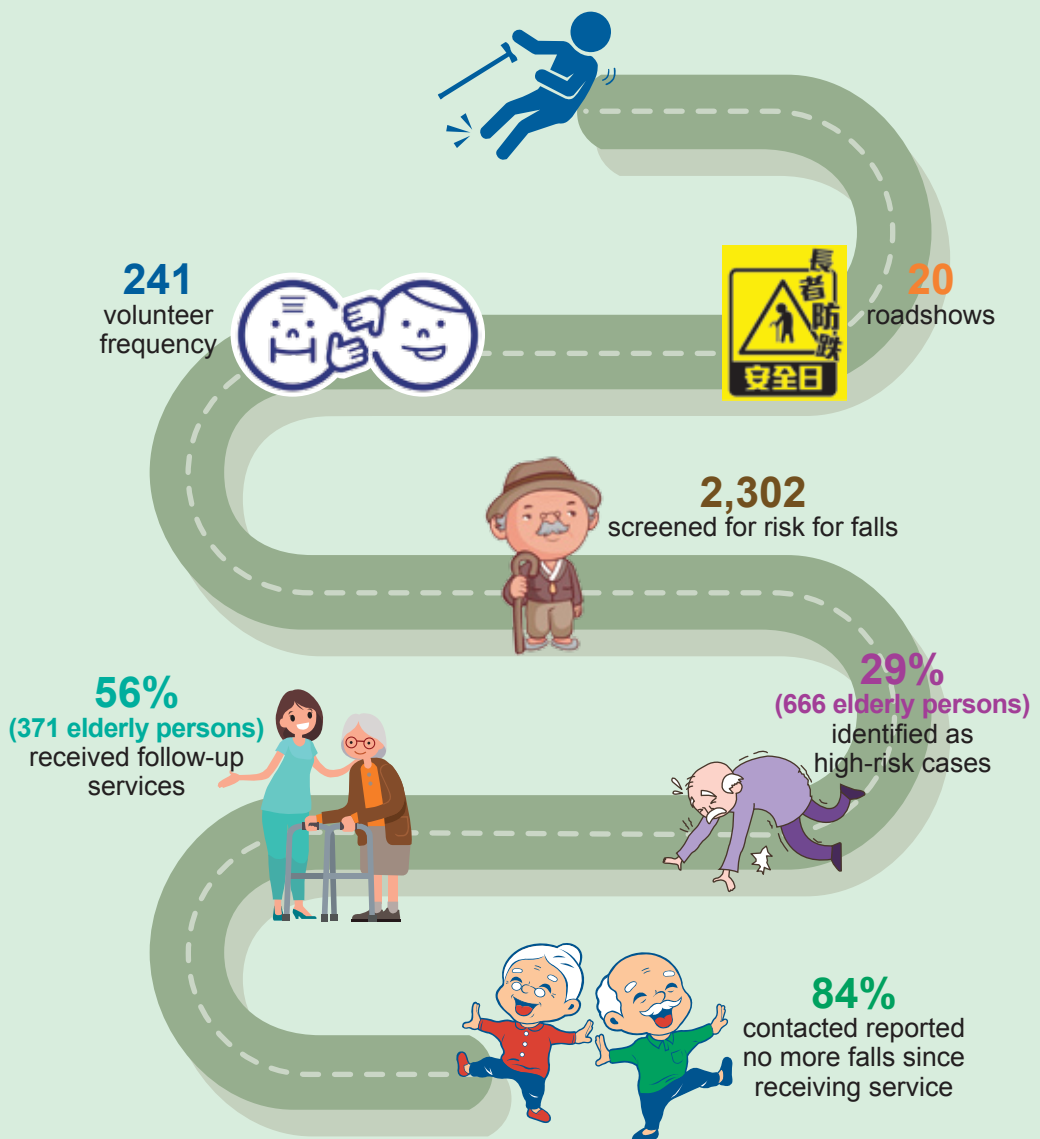
Elderly

Helping the elderly age healthily and with dignity

2016 Highlight

In 2016 elderly fall prevention continued to be the core activity of our Elderly Programme. We are happy to report that compared to 2015, not only did we screen more elderly people in the community for their risk for falls (681 more elderly people were screened, an increase of 42%), but we also followed up with more high-risk cases. In 2016, 55% of the high-risk cases received services from occupational therapists, compared to 35% in 2015. Therapists prescribed walking aids, recommended installation of handle bars in the bathrooms, and taught exercises to the elderly so they could minimize the chances of falling.

Path to Elderly Fall Prevention 2016



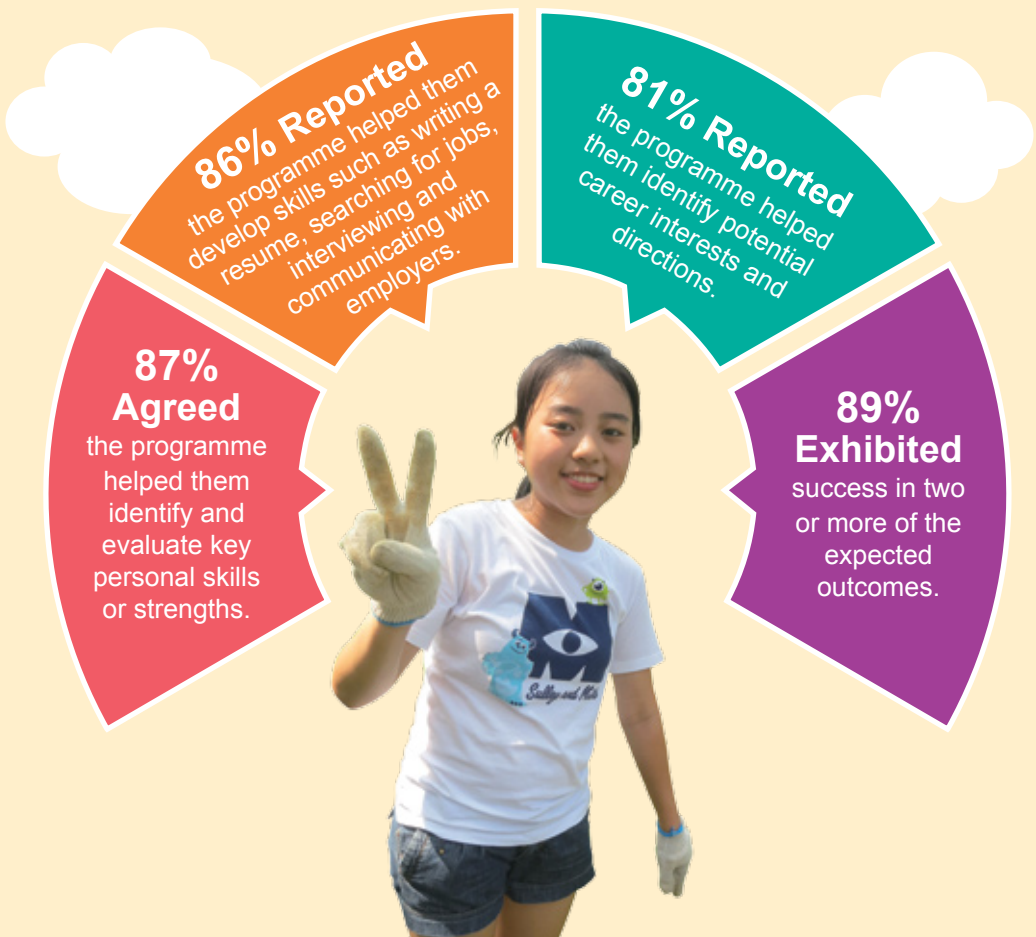
Youth

Preparing Hong Kong's underprivileged youth to enter the job market and build a career

2016 Highlight

In September 2015 we received a grant from The Moody's Foundation and launched the Youth Education and Career Exploration Programme to help youth from underprivileged families prepare for the job market.

The programme was implemented in **nine** schools across four districts with a greater population of low-income families. A total of **360 Form 4 and 5 students** participated in four kinds of activities: personality assessment, understanding the workplace, life exploration and mapping and preparing for the job market.



This year is the first of the two-year grant. Many students benefited from activities designed to help them understand themselves, break out of their comfort zones, and get ready for the “real world”. We will be bringing highlights and results from the second year of the programme in the next annual report.

Children (Hong Kong)

Giving underprivileged children the opportunity to reach their potential and break the cycle of inter-generational poverty

2016 Highlight

A new initiative, the Youth Success Programme, began in 2015. The programme set out to help grade six students adapt to life in secondary school. We designed the activities to bolster students' study and English language abilities as well as their problem-solving, communication and teamwork skills. We gave participants projects which required them to think through challenges and learn how to cooperate and communicate with fellow participants. We surveyed their attitudes before and after the activities.

82% Agreed
their problem-solving skills improved.

81% Demonstrated
an improvement in their English language proficiency.



90% Agreed
they learned study, communication and cooperation skills.

60% Agreed
their perspective on secondary school life changed.

92% Agreed
skills they learned in the programme applied to as well as helped their daily lives.

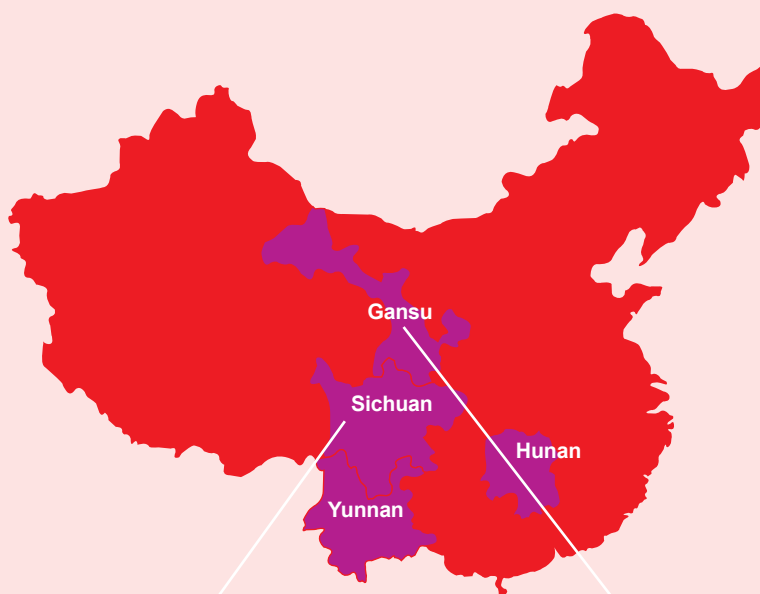
Children (China)

Helping families break the cycle of poverty by giving their children the gift of education

2016 Highlight

At the end of 2015 we received a generous grant to give selected families in Huining County, Gansu Province, a way to bolster their household incomes. Eligible families received capital grants to purchase an animal or seeds or to study a trade. Their children also received tuition support for their schooling.

We found an unexpected outcome from this programme. These families were earning higher incomes without having to leave home, so families were able to continue living together. Such a programme can be an example of how to relieve the pressure on parents to move elsewhere to seek better incomes, often separating from their children.



Major services:

- **1,328** students sponsored in **4** provinces
- **430** students served in **8** centres

11 Families

benefited from the Agricultural Livelihood and Education Support Programme.

Financials

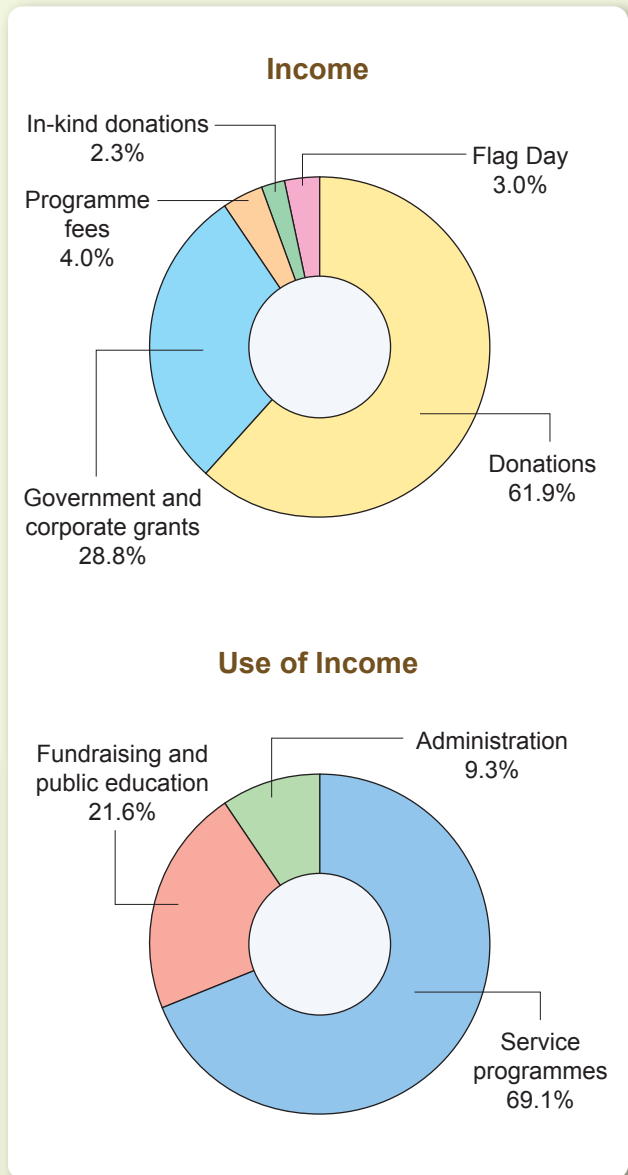
In 2016 we encountered a seven percent decrease in overall income resulting from the conclusion of a multi-year restricted donation at the end of 2015. We made necessary adjustments to accommodate this change - closing the outreach centre in Yuen Long and scaling back the programme there. Even with these adjustments, we kept partnering with a number of schools in that district in order to provide education programming to the children there. Staff members traveled from our centre in Shek Kip Mei to provide educational activities to help children from those schools learn more about character, project-based skills, and English.

We also looked for alternate sources where more income could be brought in. The Flag Day in October 2016 helped in this regard. Thanks to the hundreds of volunteers who showed up even though a typhoon had just passed through Hong Kong, over \$407,000 was raised for the work at the Centre for Kids. In addition, one individual, retired diving coach Steve Chan, spent months hiking the Appalachian Trail in the United States, raising over \$180,000 to support our fall prevention program for the elderly.

HOPE worldwide (Hong Kong) 2016 Financial Statements

Income	HK\$
Donations	8,260,637
Government and corporate grants	3,842,256
Programme fees	532,477
In-kind donations	300,550
Flag Day	407,568
	<u>13,343,488</u>

Use of Income	HK\$
Service programmes	8,940,072
Fundraising and public education	2,798,634
Administration	1,201,045
	<u>12,939,751</u>
Surplus	<u>403,737</u>



More careful handling and adjustments made in other expense items resulted in a surplus of over \$400,000 for the year.

Executive Committee & Executive Staff

HOPE worldwide (Hong Kong)

Executive Committee

Dr. Jeff Kin-hung Wong
Chairman

Aaron Tak Kin Chow

Francis Wing Fan Mak

Dr. Turner Tan-ka Sinn

Executive Staff

Daniel Te Hwa Liu
Country Director

Jonathan Lap-hang Liu
Executive Director

David Yau-wing Chung
Programme Director

Emily Wai-bik Wong
Financial Manager

Thank You !

Major Partners



STATE STREET.



Drs. Richard Charles & Esther Yewpick Lee Charitable Foundation

Tsu Te Kian Charitable Trust

Zhilan Foundation

Community Partners

- Auxiliary Medical Service
- Alfar Charitable Trust
- Care Team
- Carson and Friends
- Commission on Youth
- Department of Orthopaedics and Traumatology, The Chinese University of Hong Kong
- Education Bureau School-based After-school Learning and Support Programmes
- GeneroCity
- Hong Kong Council of Early Childhood Education and Services
- Hong Kong Institute of Vocational Education
- Hong Kong Venture Capital and Private Equity Association
- InterNations
- K for Kids Foundation
- Love Sowers Voluntary Service Team
- Remad Foundation Ltd
- Sham Shui Po District Social Welfare Office, Social Welfare Department
- Social Welfare Department District Support Scheme for Children and Youth Development
- The Caring Hearts Photographic Society
- The Government of the HKSAR of the People's Republic of China
- The Government of the HKSAR Home Affairs Bureau
- The Government of the HKSAR Leisure and Cultural Services Department
- The Government of the HKSAR Social Welfare Department
- The Incorporated Management Committee of HKMA David Li Kwok Po College
- TWGHs Wong Fut Nam College
- Urban Renewal Authority
- Yale Club of Hong Kong, Association of Yale Alumni
- Yew Chung International School (Secondary)
- Yuen Long Public Middle School Alumni Association
- 陌默送義工隊

Corporate Partners

- Able Solution Consultants Company Limited
- Andox Ltd
- AngelSky
- Asia Tiger Media Company
- Asian Force Security Limited
- B. Braun Medical (HK) Ltd
- Chun Hing Plastic Packaging Manufactory Limited
- Citibank
- Citibank N.A. London Branch
- CreativeKids
- Cummins Hong Kong Ltd
- D Park
- Earth Selectives
- Eaton Hotel
- Fiducia Management Consultants
- General Electric International Inc
- Herbalgy Pharmaceutical Limited
- Hong Kong Fundraising Consultancy
- Hopkins Management Group Limited
- International Management Association
- JEMS Learning House
- Joyous Communication Limited
- KONE Elevator (HK) Ltd
- Laurence Lai Gallery

- Langham Hospitality Group
- Link Asset Management Limited
- Mandatory Provident Fund Schemes Authority
- Moon Yick Company Limited
- MTR Corporation Limited
- NVIDIA Singapore PTE.LTD
- Olympian City 2 Management Company Limited
- Orange Sky Golden Harvest Entertainment (Holdings) Limited
- Park Central
- Pressfield Company Limited
- Quantumbilities Education Centre
- Rykadan Capital Limited
- Santa School Hong Kong
- Sino Estates Management Limited
- SkyONE Network
- Sportsoho Media Ltd
- Sun Sing Tea
- Talent-Sign Properties Ltd
- Target Sourcing Services Hong Kong Limited
- The Brandy Co Ltd
- The Children's Place (Hong Kong) Limited
- The Garden Company Limited
- The Hong Kong Mortgage Corporation Limited
- The Women's Foundation Limited
- UBS AG Hong Kong
- Vitel International Hong Kong Limited
- Wasabi Creation Public Relations & Communications Ltd
- Wasser Beauty
- Wells Fargo Bank
- WSGR (Wilson Sonsini Goodrich & Rosati)
- Wyeth Nutrition Hong Kong

Individual Partners

- Professor Anthony Cheung Bing-leung, GBS, JP, Secretary for Transport and Housing
- Professor Frederick Ma Si-hang, GBS, JP, Non-executive Chairman, MTR Corporation Limited
- Professor Alfred Chan, Chairman of the Elderly Commission
- Mr. Cheung Man-sun, former Assistant Director of Broadcasting, RTHK, Ambassador for HOPE *worldwide*
- Ms. Candy Chea Shuk-mui, radio disc jockey, RTHK
- Grandma Tsang, Neckerchief Knitter
- Mr. Jason Chan Pak-yu, Singer
- Mr. Steve Chan, Diving Coach
- Mr. Steve Chin, Lead Evangelist, Hong Kong Church of Christ
- Ms. Alison Wong, Head of Film and Media, Chinese International School
- Ms. Gin Lee, Singer
- Ms. Mala Uttam, Service and Action Coordinator, Chinese International School

Other Partners

- Gansu Provincial Education
- Bureau Education Bureau, Huining County, Gansu Province
- Hunan Provincial Education Bureau
- Education Bureau, Chengdu, Sichuan Province
- Yunnan Provincial Education Bureau
- Education Bureau, Yuanyang County, Yunnan Province
- State Street Fund at Give2Asia
- United Way Worldwide grant on behalf of the generosity of Target Foundation