

HOPE worldwide 30th Anniversary

**Creating Hope**

for the Future



**2022-2023  
 Annual Report**



# Grateful to have

As we celebrate the 30th year of HOPE *worldwide*'s service in Hong Kong, we extend our heartfelt gratitude to the dedicated volunteers, generous donors and sponsors, supportive social welfare organizations and community groups, professional advisory teams, the unwavering support of HOPE *worldwide* ambassadors Mr. Cheung Man Sun and Ms. Candy Chea, as well as the overseas HOPE *worldwide* headquarters. It is through your collective efforts that we have steadily grown over the years.



# by our side

Throughout the past 30 years, we have experienced both favorable and challenging times, which have prompted us to introspect, seek solutions, and redefine strategies. We remain committed to our mission of bringing hope and transforming lives for the vulnerable groups. While at times we may feel our resources are limited in the face of various societal needs, however, the transformation of service beneficiaries, their physical recovery, renewed motivation, or even a grateful smile, proof the positive impact of our works and encourage us to persist in moving forward.

There is always room for improvement, and we have many development plans ahead. However, we will never forget our original intention. With love and sincerity, we will continue to serve those in need. Whether you are a supporter or a beneficiary, we are grateful to have you by our side throughout this journey.

The **Hope** You Are Bringing. The **Lives** You Are Changing.

2  
0  
2  
2  
2  
2  
0  
2  
2  
3

# Our Services

No. of beneficiaries



Elderly Service

10,940  
person-times



HOPE worldwide Centre for Kids

5,151  
person-times



Dental Clinic

13,796  
person-times



# Our heartfelt thanks for your support

No. of participants



Elderly Day

2,160  
person-times



Other services

580  
person-times

# Healthy Aging at Home



## Self-reliance Elderly Care Program



The Self-reliance Elderly Care Program is designed to help the seniors live independently and reduce the burden on caregivers. The goal is to assist the seniors in achieving three 'No's (no diapers, no bedridden, no restraints), maintaining their health, and preventing disability so that they can live with dignity and happiness.

The pressures on elderly care services in Hong Kong are increasing due to the aging population. Many elderly care facilities have adopted mechanical care in their management, such as scheduled washroom breaks, leaving the seniors with limited autonomy. Such arrangements would gradually diminish the seniors' dignity, and they would ultimately end up spending their remaining years within the confines of these facilities.

### A Home With No Wall

We had the opportunity to visit AOI Care this year, which is an organization to provide self-reliance elderly care service in Japan. Throughout the visit, we were deeply inspired by the fact that the seniors could age with dignity. Mr. Tadao Kato founded AOI Care in 1999, providing residence to seniors. In this Centre, the seniors could enjoy a great deal of autonomy, as they are allowed to participate in various activities according to their own preferences and abilities, such as cooking, gardening, tea-making, and woodworking, which enable them to contribute to the community.

The seniors at AOI Care would push their own carts to walk 50-meter to get their food and then enjoy meal with the others. This distance also trains their walking ability. They could cook their own food, with the staff on the side to assist if necessary. Most staff are mothers who are allowed to bring their children to work. The seniors would look after them as their own grandchildren. This inclusive model caters to the needs of everyone living or working in this Centre.

Many organizations in Taiwan have sent working teams to learn about AOI Care's philosophy and model, hoping to put such concepts into practice in their services. We also hope to promote this concept in Hong Kong, allowing our seniors to live with dignity and happiness in their remaining years.



# JC InnoPower@ Healthy Ageing in Park

To achieve self-reliance, the primary condition is that the elders can walk and move around healthily. According to different researches, sarcopenia is common among the older adults which is one of the most important causes of functional decline and loss of independence.

JC InnoPower@ Healthy Ageing in Park was a program funded by the Hong Kong Jockey Club that aimed to screen the elders with sarcopenia, identify the high-risk individuals, and reduce their risk of falling. 120 elders who lived in Sham Shui Po were screened and over 40 of them were suspected of having sarcopenia. Our physiotherapist gave them a test and the diagnosed elders were offered training courses by the students from the Department of Physical Education of the University of Education for ten consecutive weeks in the public facilitated park. These elders were trained to do muscle-strengthening exercises.

To help these elders understand the effectiveness of their training and encourage them to continue doing exercise in future, we held a Santa Claus Orientation Activity at the end of last year, where trained elders were asked to walk to different check points in the Sham Shui Po district. They had a lot of fun with their partners during the walk. We were pleased that most of them could complete the tasks within the specified time, proving the effectiveness of their training.

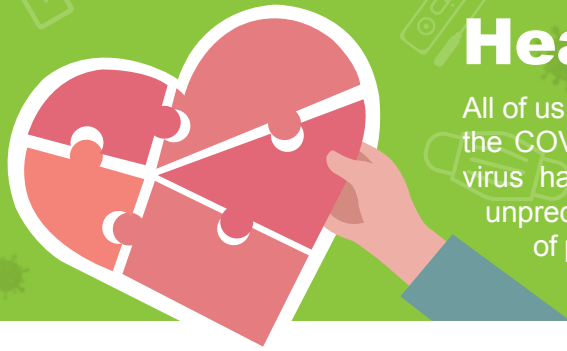


## Opportunities for the Elderly Project

To advocate healthy aging at home, we participated in the Social Welfare Department's 'Opportunities for the Elderly Project' and held a 'Stick for Fun' activity for three consecutive months. We particularly trained the mobility, stretching ability, and body function of the elders through various long stick exercises. On the other side, the participated elders could learn and play together with friends, embodying the attitude of 'living a wonderful life until old age'.



# Rebuilding Physical and Mental Health after the Pandemic



All of us, no matter where we were living, had been deeply affected by the COVID-19 pandemic over the past few years. The power of the virus had turned our lives upside down and we had experienced unprecedented situations. There was a significant need of restoration of physical and mental well-being due to all kinds of anxieties and separation brought by the pandemic.

## COVID-19 Recovery Care Day



A survey indicated that over half of COVID-19 recovery patients were affected by long-haul COVID symptoms. In November last year, HOPE worldwide held the 'COVID-19 Recovery Care Day' at the Jao Tsung-I Academy. We invited experts, Professor Hui Shu Cheong and Associate Consultant Neurologist Dr. Fan Sin Ying, as guest speakers to discuss the impact of the long-haul COVID symptoms on recovery patients and provide them with recovery advice and tips. Other esteemed guests attending the event included our organization's ambassador, Mr. Cheung Man Sun, and veteran presenter, Ms. Candy Chea.



During the panel discussion, several COVID-19 recovery patients from low-income families were invited to share their personal experiences. Mrs. Li and her 7-year-old son felt extremely worried when they tested positive as they had no money or food during home isolation. Fortunately, they received

telemedicine services and medication delivery provided by HOPE worldwide. Even after recovery, Mrs. Li still experienced residual effects such as insomnia, headaches, and poor memory. Granny Leung, an elder in her 80s, noticed a significant decline in her memory after testing positive. She even forgot to turn off the stove before going out, but she was a singleton. After recovery, she felt a lack of motivation in life and lost interest in things. Another elder in her 70s, Granny Lam, who also lived alone, experienced similar residual effects and would want to know where to seek help.

This event, sponsored by the HSBC Hong Kong Community Partnership Program 2022, also had a series of exercise workshops, music performances and art activities for the participants to relax and regain the joy of life.

## COVID-19 Recovery Exercise Training Program

Furthermore, the HSBC Hong Kong Community Partnership Program provided funding for us to organize a series of exercise classes for 700 elders and low-income families affected by long-haul COVID symptoms. These classes aimed to help them alleviate the impact of long-haul COVID symptoms and regain their strength and health.





**Fearless Life Academy: Journey of Life and Death**  
Participants had the opportunity to visit the Haven of Hope Christian Service's Care and Attention Home, and the Chinese Permanent Cemetery Memorial Garden in Tseung Kwan O.



Participants learned the caring service for the last stage of life.



Participants discussed the concept of 'good death', and gained firsthand knowledge about green burial practices.

## Fearless Life Academy for Parents and Children Program

Discussing death with the elderly is a sensitive and difficult topic. Death is an inevitable part of life. Open and honest conversations can foster emotional connections for both the elders and their families.

Sponsored by the Shine Program of The Board of Management of The Chinese Permanent Cemeteries, HOPE *worldwide* partnered with a social enterprise, RIP88, and its founder, Mr. Pasu Ng, to organize the Fearless Life Academy for Parents and Children Program. This program aimed to promote open dialogue about death, enhance understanding among family members, and encourage proactive planning for end-of-life arrangements. The 10-session program included workshops and visits focused on life and death education. It provided an opportunity for the elders and their families to learn about different topics related to life and death, discuss and understand each other's thoughts and desires, and gain insights into others' perspectives on life and end-of-life arrangements.

Our social workers and professionals also conducted individual consultations for 30 families to discuss various pre- and post-life arrangements. Additionally, the program allowed 10 participants design their own pre-funeral ceremonies, providing them an experience of arranging farewell in their own unique way, letting them to share four aspects of life (gratitude, apology, love, and farewell) with their loved ones, engaging in discussions about death and rehearsing separation.



The founder of RIP88, Mr. Pasu Ng, and our social worker, Mark, were interviewed by Radio Television Hong Kong to provide insights on the Fearless Life Academy Program.



In one session, the Fearless Life Team allowed the participants to choose bouquets, enabling them to share their preferences and thoughts on funeral arrangements.



A memorable workshop involved an experiential activity for participants to wear simulation suits that mimicked the physical limitations of elderly and engaged in activities such as exercising in the community and purchasing daily necessities at a supermarket. The 'prospective seniors' found this experience impactful and unforgettable.



Another visit was made to the Jockey Club Haven of HOPE Hospice, where participants learned about end-of-life care services. This visit prompted them to contemplate their own or their family members' choices as they approach the later stages of life.





# Volunteers for Elderly Day

As pandemic restrictions began to ease at the end of 2021, over 2,000 volunteers were able to participate in the Volunteers for Elderly Day on January 8, 2022. On this particular day, they visited and sent care and warmth to over 800 elders who were living alone across Hong Kong.

Due to the pandemic and isolation restriction, we could not arrange any visit service for two years. Many elders expressed their happiness that they could finally chat with the volunteers again. We also relaunched the Fulfill a Wish Program, over 30 elders participated and the volunteers were thrilled that they could help them achieve their wishes.



# Community Care Services for the Elderly

HOPE worldwide is now a recognized service provider of Community Care Services for the Elderly by the Social Welfare Department. We offer door-to-door services, including meal delivery, medical escort, rehabilitation therapy, nursing services, personal care, home cleaning, speech therapy, and more. Our care services can be applied by the elders through presenting their Community Care Service Voucher for the Elderly.

- Basic Care
- Meal Delivery
- Caring Plan
- Caregiver Support Service
- Home Safety Evaluation and Improvement Suggestions
- Home Care
- Rehabilitation Training
- Personal Care
- Support Service
- Escort Service





# Children: Winning at the Midpoint

## HOPE worldwide Center for Kids

The HOPE *worldwide* Center for Kids has provided after-school learning assistance and character-building guidance to 32,050 children from low-income families, with the aim of breaking the cycle of poverty for these families.



The beneficiaries includes:



10,887

Low-income families



32,050

Children from low-income families



370

SEN children

## Project Futuremark

HOPE *worldwide* is invited by the Hong Kong Council of Social Service as one of the service partners of the Project Futuremark for the second year. This project, sponsored by The Hongkong Land, provides a series of diversified support activities for teenagers living in subdivided flats in Yau Tsim Mong and Sham Shui Po districts through theme-based activities such as education courses, social contacts, family relationships, and healthy living, with the aims of expanding their horizons and life experiences, and inspiring their growth and upward mobility.

Over the past year, HOPE *worldwide* has held 87 classes of 'Fun English, maths and Chinese Enhancement Courses', 'Character and Social Groups', and 'Oral and Joint Muscle Health Workshops' for students from Primary 4 to Form 3 who were living in Sham Shui Po district, including the ethnic minority students, to fill the gap of their unmet academic learning and character development needs. Through funny teaching activities and games combined with school curricula, HOPE *worldwide* helped these young people to improve their knowledge and interest in learning.

At the same time, through Character Counts! developed by the American Josephson Ethics Research Institute, HOPE *worldwide* used chess games and sports training to enhance the 'six pillars of character', namely respect, responsibility, honesty, fairness, care, and citizenship.





# Dental Healthcare Social Enterprise



## Smile Again Project extends to special groups

The HOPE *worldwide* Dental Healthcare Social Enterprise aims to use the revenue generated by dental services to fund dental treatment for low-income citizens, including minority groups. This year, the Smile Again Project has expanded its collaboration with different special groups in Hong Kong. We have partnered with Impact Hong Kong, the Christian Action Association, the Salvation Army Chai Wan Hostel, the Hong Kong Blind Union, and The Vine Church to provide dental assistance to homeless people, students living in hostels, disabilities, refugees, and others.

The Smile Again Project is sponsored by the HSBC Community Partnership Program. Working together with various community organizations, we provide free dental check-ups and cleaning services for low-income families and their children aged 0-6. Since the implementation of the project, 400 low-income family children with emotional, mental, or behavioral disorders, physical disabilities, and special educational needs (SEN) have been benefited.

## Improving the quality of life of the elderly through dental health

A study in Japan has found that maintaining healthy teeth and gums not only affects oral hygiene but might impact brain degeneration. The 80+20 Community Elderly Oral Health Program has been providing free dental check-ups for low-income elderly over the past few years. The goal of this program is to help the elderly retains at least 20 healthy teeth by the age of 80. Sponsored by the Suen Chow Yuet Kam Charitable Fund, the program has offered dental services to over 800 elders, and among them, 425 have been referred to free dental cleaning services.





## HOPE worldwide Dental Clinic

Shop C, G/F Kin Sun Building, 157 Kweilin Street, Sham Shui Po  
Tel: 2156 2055

G11, G/F Hang King Shopping Arcade, 9 Wing Fong Road, Kwai Chung  
Tel: 2157 3740

Shop 1, G/F Kui Shing Building, 302 Sai Yeung Choi Street North,  
Prince Edward Tel: 2616 0661



## Cancer patient regains taste of food

Special attention and care are required for cancer patients if they need dental check-ups. HOPE worldwide starts to collaborate with some cancer organizations and rehabilitation centers to provide services for those in need.

Recently, an elderly patient who is in later stage of cancer expresses his wish to taste food again. Our dentist, together with our support, made a suitable set of dentures for him. This dentist, who has a loving heart, bought some Chinese food for him immediately after the treatment.



According to different surveys, most low-income elderly neglect dental care due to cost issues. Less than 50% of elderly would seek professional dental check-ups when facing oral problems. Another situation is that many elders rarely take care of their teeth because they do not have toothache problems. Therefore, we have been focusing on promoting oral care knowledge for the elderly. We also send dentists to various elderly centers for dental check-ups and teach the elderly how to take care of their teeth. Last year, this program collaborated with six elderly centers and held 15 dental check-ups.

## HOPE worldwide supports University of Hong Kong to run a new project for community testing

HOPE worldwide has been collaborating with the Faculty of Dentistry of the University of Hong Kong since 2018, for conducting research and analysis on elderly dental care. This Faculty recently adopts artificial intelligence (AI) to help the elders to analyze their gum health and design dentures based on missing teeth. This not only reduces costs but also reduces the number of trips the elders have to make to the dental clinic.

Artificial intelligence collects a large amount of data for analysis, and gum health or inflammation can be analyzed by uploading photos, helping the elders to understand and maintain their oral health. The elders now only need to use their phones to take pictures of their gums and the specialists would know their oral health condition.

The Faculty of Dentistry's outreach team, through HOPE worldwide, conducted tests in the community for 300 elders, using artificial intelligence to analyze images, explain gum problems to the elders, and provide improvement methods. Some elders who had always believed that their teeth were healthy only realized their actual gum condition after seeing problem areas pointed out in the photos.

With the widespread adoption of smartphones and technological advancements, the Faculty of Dentistry of the University of Hong Kong hopes that this research can be widely used in Hong Kong, especially to benefit the elders.



# C: Voluntary Service

## Starting with one 'C' a day

Over a year ago, HOPE worldwide began promoting voluntary service with the aim of encouraging people to pay attention to the needs of those around them and to offer help and care at anytime and anywhere without being restricted by any specific volunteer activities. Even a simple greeting or offering a seat is considered part of C.

What does C stand for? C represents Christ, Compassion, and Care, and can also be interpreted as 'giving' in its Chinese meaning. Just as we need vitamin C every day, let us all add one C to someone else's life every day.

Through the C initiative, HOPE worldwide intends to bring together the resources and strengths to show care for people in the community or neighborhood, allowing them to feel the warmth between people and even solve their daily needs. On other side, the volunteers can understand the needs of people from different social backgrounds, exert the spirit of mutual assistance and love, create influence together, and build a harmonious society.



## Future Development

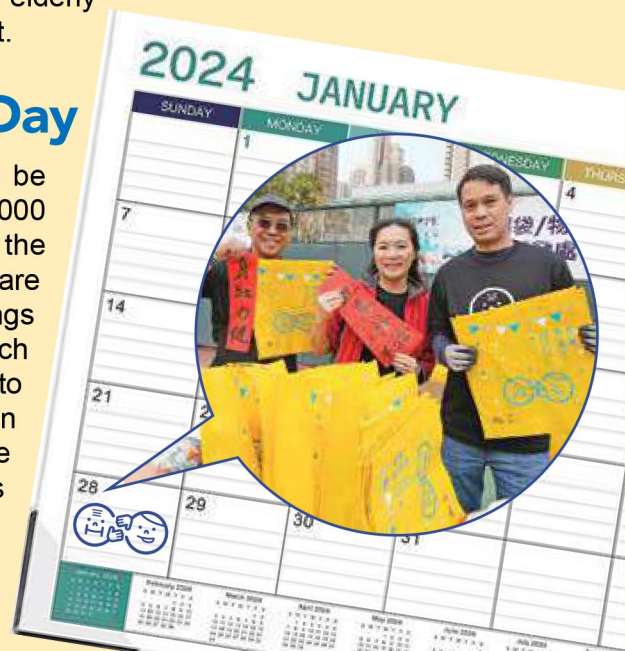
### Elderly Exercise and Day Care Center

We are thrilled to announce that the long-planned Elderly Exercise and Day Care Center has found a suitable location. Sponsored by the Suen Chow Yuet Kam Charitable Fund, the Center will be opened in the fourth quarter of 2023 to provide various daytime services for the elderly living in the district.



### Volunteers for Elderly Day

Volunteers for Elderly Day is scheduled to be held on January 28, 2024. More than 2,000 volunteers will be dispatched to visit the singleton elders or those with spouse who are living in public housing estates or old buildings in Hong Kong. The opening ceremony, which had been suspended for several years due to the pandemic, will be held again. More than 2,000 volunteers will reunite to celebrate HOPE worldwide's 30th anniversary, and it is amazing that some volunteers have dedicated to serve for 30 years.



## Executive Committee

Francis Wing Fan MAK (Chairman)

Aaron Tak Kin CHOW

Chi Wang HUI

David Kwok Kee CHENG

Jeffery Shu Cheong CHAN

Richard Shek Ming CHAN



## Executive Staff

Jonathan Lap Hang LIU  
Executive Director

David Yau Wing CHUNG  
Hong Kong Education Programme  
Director

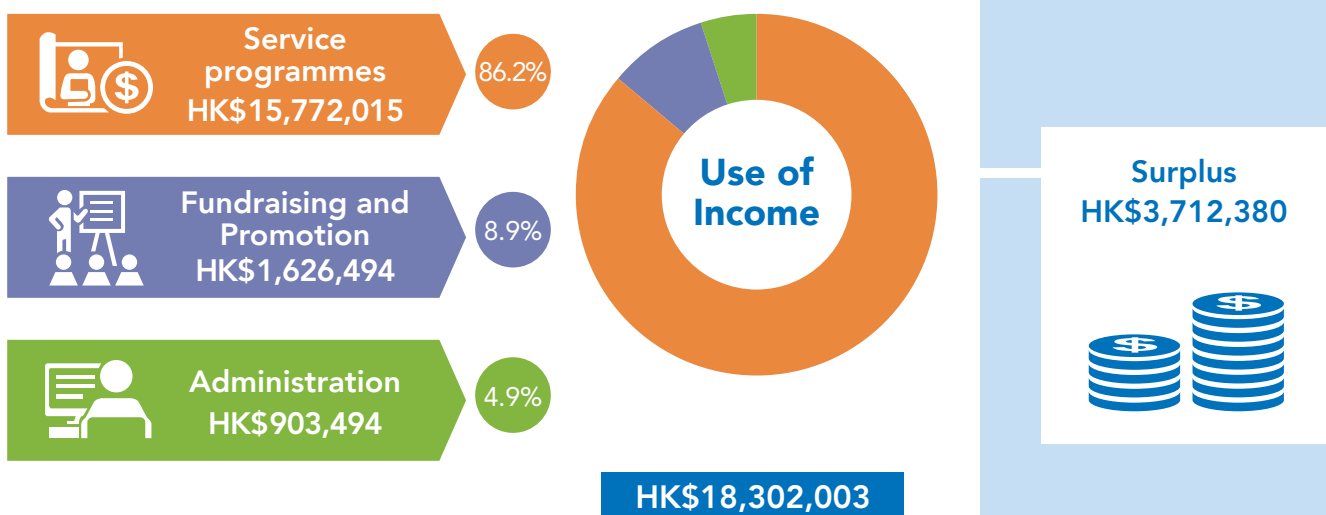
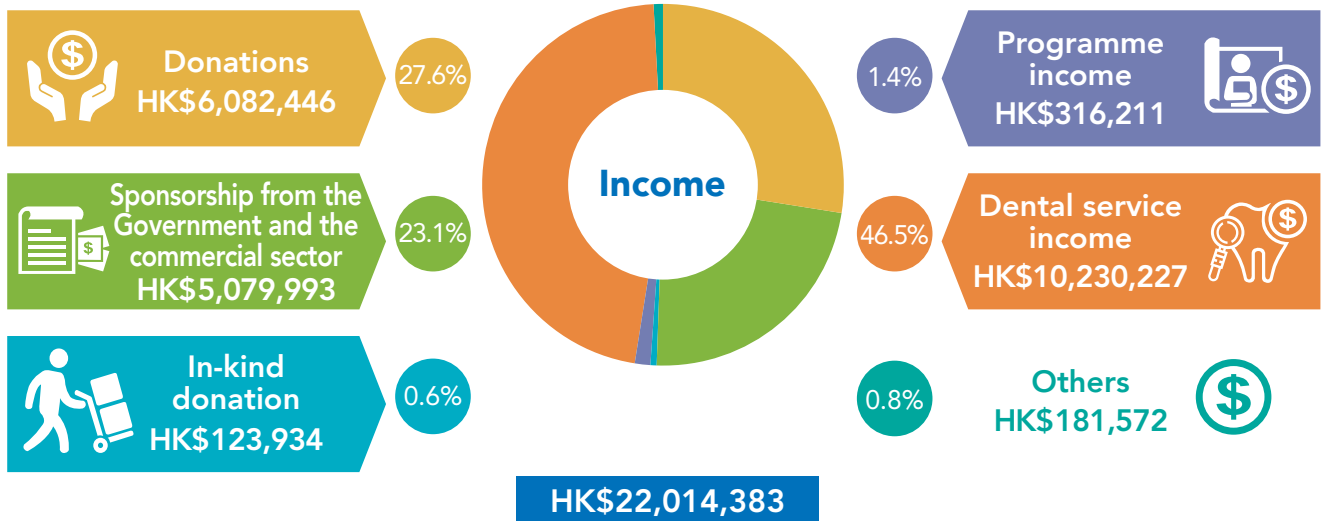
Emily Wai Bik WONG  
Financial Manager

## Financial Highlights



HOPE *worldwide* always adheres to the conviction of 'good steward' in the Bible and spends most of the donations on the beneficiaries. It is our aim to maintain the administrative expenses within 10% of the total expenditure. In 2022, 86.2% of the total expenditure was allocated to support different service programs and activities.

### HOPE *worldwide* (Hong Kong) 2022 Financial Statements



# Heartfelt Thanks to Your Generous Donations and Supports

## Corporations / Organisations

- Artwell Holdings Limited
- B.Braun Medical (H.K.) Ltd.
- Buick Management Limited
- Burberry Limited
- C.C.C. Kei Shun Special School
- Chinese International School
- Comolux Ltd.
- Fiducia Limited
- Grand Multi-Modal Logistics Co., Ltd.
- Herbalgy Pharmaceutical Ltd.
- Hong Kong Baptist Mr. & Mrs. Au Shue Hung Rehabilitation & Healthcare Home
- Hong Kong Church of Christ
- Hopkins Training & Education Group Limited
- HSBC Hong Kong Community Partnership Programme 2022
- Hutchison Telephone Company Limited
- International Management Association
- KJ Global Resource Co. Ltd.
- Lee Kum Kee International Holdings Ltd.
- LHM Medical Technology (Hong Kong) Limited
- Organic Plus
- PAX Global Technology Limited
- Remad Foundation Ltd.
- SmarTone Telecommunications Holdings Limited
- Suen Chow Yuet Kam Charitable Fund
- Summit Culture Ltd.
- Target Sourcing Services Hong Kong Limited
- The Board of Management of the Chinese Permanent Cemeteries
- The Book Tuft
- Wasabi Creation Ltd.

(Names listed in alphabetical order)

## Individuals

Ang Ching Gi	Chan Choi Luen	Chan Yin Mei	Chau Sai Hong	Cheung Siu Chuen	Ching Chun Ha	Chu Miu King	Fu Bo Yin
Angel Wong	Chan Yee Heung Sarah	Chan Yun Yee	Chau Chi Kwong	Cheung Yiu Hing	Chiu Ping Fai	Chu Yuk Fung	Fu Wai Chee Ada
Anthony Lam	Chan Wai Lam	Chan Kok Wing	Chau Suk Mei Elisha	Cheung Chin Pang	Chiu Pui Kwan	Chu Yau Chai	Fu Wing Shing
Anthony Ng	Chan Leung Yuen	Chan Shui Tai	Chau Pui Shan Maria	Cheung Kwok Wing	Chiu Ngar Yin Joe	Chu Li Fun	Fung Shui Yin
Au Kwai Poon Pauline	Chan Siu Yung	Chan Wai Mui	Chau Kong Ha	Cheung Wai Keung	Chiu Tak Yee Amy	Chu Suk King	Fung Yuk Ping
Au Sing Chun	Chan Kan	Chan Fung Har	Chau Man Wai	Cheung Ti Wai	Chiu Shuk Yi Windy	Chu Yin Yee	Fung See Ching
Au Mei Sze	Chan Yin Ping	Chan Kuen Chau	Chau Siu Ha	Cheung Lai Fan	Chiu Lai Kwan	Chu Kin Sum	Fung Chi Keung Jam
Au Ka Wai	Chan Oi Ming	Chan Man Ching	Chau Tsui Ping	Cheung Ka Shing	Chiu Sin Ching Alice	Chu Cheuk Yin	Fung Yan Loon
Au Pui Yan	Chan Chui Yu	Chan Chung Yiu	Chau Po Wai	Cheung So Kuen	Chiu Chung Man	Chu Wai Yi	Fung Ka Leung
Au Sui Kwan	Chan Pun Lap Bernard	Chan Tik Yee	Chau Shun Kai	Cheung Po Yin	Chiu Wai Shan	Chu Wing Cheong	Fung Nga Chung Adrian
Au Yuk Yee	Chan Sau Chun	Chan Ka Ho	Chau Chun Ming	Cheung Sing Chen	Chiu Ka Moon	Chu Yin Wun Eunice	Fung Wai Hoo
Au Ngai Yan Kanlice	Chan Lan	Chan Wing Man	Chau Kin Lung	Cheung Hoi Yan Virginia	Chiu Wai King	Chu Kuen Wai Edmond	Fung Kwok Chi
Au Kwan Sui	Chan Yuk Chun	Chan Sau Kuen	Chau Wai Wa	Cheung Po Wah	Chiu Pak Man	Chu Suet Fan	Fung Lin Hoi Rita
Au Huen Man	Chan Fong	Chan Pen Wye-Po	Che Sau Wai Angela	Cheung Soo Ching, Ivy	Chiu Yuk Ling	Chu Wai Ming	Fung Yuk Ching Kitty
Au Tsiem Ming Peter	Chan Ping Kwai	Chan Yuen Yam	Cheang Shuk Wah	Cheung Wai Ping	Choi Wing Tak	Chu Man Wa	Fung Yuet Ngo
Au Yeung Oi yee	Chan Ching Man	Chan Wai Yun	Check Koon Wai	Cheung Yuk Tak	Choi Tze Wing	Chui Kai Tai Tommy	Fung Tsun Wai
Au Yeung Shing Kit	Chan Cheuk Hon	Chan Shu Nga	Chen Chi Lee	Cheung Yin Yuk	Choi Shun Wo	Chui Wai Sheung Estella	Fung Siu Lan
Au Yeung Hoi Yuet	Chan Fat Sang	Chan Po Chun	Chen Hsiu Li	Cheung Ka Pang	Choi Lai Wan	Chung Wai Man Cindy	Fung Chi Wan
Au Yeung Ka Yin	Chan Kin Wah	Chan Pik Kwan	Chen Chi Fai	Cheung Hing Mui	Choi Wai Ling Wendy	Chui Chi Wah	Fung Wai Ling
Au Xiao Ling Stella	Chan Suk Man	Chan Lai Na Yat Kay	Chen Shun	Cheung Hon Wing	Choi Hiu Fung Davis	Chuk Kit Yee Teresa	Fung Wai Yip
Bella Chan	Chan Yuet Ying	Chan Ho Kwan	Chen Li	Cheung Wai King	Choi Wai Yu	Chum Wai Man Cindy	Fung Kwan Fong May
Boris Ma	Chan Ka Wai	Chan Hei Kuen	Chen Minghui Amy	Cheung Tsz Mei	Choi Man	Chum Wai Yung	Fung Chi Yung
Chan Wai Fong	Chan Yuk Shan Bonnie	Chan Yin Ho	Chen Guo Wei	Cheung Kam Lan	Choi Lai Fun	Chung Yan Ho	George William John Palmer
Chan Wai Yan	Chan Mei Kuan	Chan Lai Tan	Chen Jie Ling	Cheung Chiu Man	Choi Lai Ching	Chung Lin Fa	Go Tin Piu
Chan Wai Kai	Chan Man Chun Andy	Chan Cho Yin	Chen Pak Ming	Cheung Ling Phionna	Choi Wing Ting Abby	Chung Kwok Yung	Gu Xinfeng
Chan Wai Jong	Chan Hiu Ching	Chan Yiu Hon	Chen Lei Ling	Cheung Kim Wah Stanley	Choi Kwok Keung	Chung Chun Fuk	Guo Chao
Chan Sze Wan	Chan Sing Leung	Chan Shun Man	Cheng Yuk Ming	Cheung Ho Wang, Ho Fook Hong	Choi Siu Ming Agnes	Chung Chun Ming	Ha Ching Man
Chan King Man	Chan Sau King	Chan Chui Fung	Cheung Chun Yin	Cheung Shao I	Choi Wai Ming	Chung Ka Wing	Hang Yin Tong
Chan Yat Lung	Chan Wai Lan	Chan Ming Chung	Cheng Oi Kwan	Cheung Chi Yan	Choi Sau King	Chung Shuk Kwan	Hau Yik Ling
Chan Hin Lung	Chan Kit Ching	Chan Ting Him	Cheng Yin Yin	Cheung Sik Man	Choi Charlotte	Chung Hoi Lung	Hau Chuen Chun
Chan Tak Cheung Alexander	Chan Lim Chee	Chan Lai Fan	Cheung Chi Ying	Cheung Ching Ping Stephen	Choi Sai Fung Joey	Chung Yau Lin	Hau Ching Han Maria
Chan Wai Ying	Chan Yuk Mui	Chan Chiu Hei	Cheng Sze Nga	Cheung Fuk Yau	Choi Hoi Fai	Chung Lai Na	He Yong Ye
Chan Wang Kwan	Chan Wai Ming	Chan Mei Yan	Cheng May Wah Bonnie	Cheung Wai Chun	Chong Shing Ho	Chung Kam Ip	Helen Fan
Chan Yuk Lun	Chan Yuk Wan	Chan Wai Choi	Cheng Yee Sang	Cheung Ho Yin	Chong Tin Lung B	Chung Chor Yan, Helen	Helen Lui
Chan Wai Man	Chan Lai Yung	Chan Fung Ping	Cheng Yik Lam	Cheung Wing Foon	Chong Yin Hing	Chung Hoi Ying	Heung Lai Kuen
Chan Suet Lai Shirley	Chan Choi Lin	Chan Tih Che	Cheng Chi Kit	Cheung Yin Wai	Chong Ka Leung	CY & Ruby	Ho Shiu Leung
Chan Kwan Yuk	Chan Kwan Yee	Chan Sau Wai	Cheng Ka Wah	Cheung Sau Fun	Chou Meng Ling	Dai Yunting	Ho Yuk Kuen Rita
Chan Yau Tai	Chan Shui Tak	Chan Yin Tik Alex	Cheng Wing Ho	Cheung Ka Shing	Chow Chiu Mo	Danny & Fanny Choi	Ho Kit Ling
Chan Wing Fu Ivan	Chan Sze Kwong	Chan Chi Kei	Cheng Yin Man	Cheung Yuk Leung	Chow Pui Yee Marcella	Danny & Wendy Chui	Ho Yiu Fei
Chan Cheuk Kee	Chan Chiu	Chan Kwan Shan	Cheng Yuk Yip	Cheung Wang Hong	Chow Shuk Ping Ada	David & Debbie Fong	Ho Man Chi
Chan Pui Lun	Chan Chuen Ming	Chan Yee Man	Cheung Siu Fun	Cheung Sing Din	Chow Yim	Deng Xiao Lan	Ho Shui Tak Martin
Chan Han Lai	Chan Wan Sze Samantha	Chan Wai Chung	Cheng Sui Ha	Cheung Ming Wang	Chow Xu Teng Mary	Denny & Teresa Yu	Ho Chi Tim
Chan Siu Wai	Chan Wing Lok	Chan Siu Yuk Bonnie	Cheng Yuen Ting	Cheung Yim Ling	Chow Pui Sze	Dr. Elizabeth Sin	Ho Man Sze
Chan Yau Shing	Chan Hing Fung	Chan Kit Ming	Cheng Tsz Yan Natalie	Cheung Yin Ching	Chow Ming Chu	Dr. Lui Ho Yin	Ho Pui Tsing
Chan Oi Mui	Chan Hiu Nam	Chan King Ho	Cheng Yee Nei	Cheung Sui Fong	Chow Tsz Hong	Eddie Tam	Ho Mau Wah
Chan Kam Mui	Chan Ching Yee	Chan Wai Yu Michelle	Cheng Wing Cheung	Cheung Cho Ying	Chow Kai Kwan	Emily Chan	Ho Lai Ying Ada
Chan Gim Kam	Chan Wai Sum	Chan Kei Lam	Cheng Man Kuen	Cheung Wai Shun	Chow Yin Yee, Edith	Faith Delrosario	Ho Sze Man Doris
Chan Chun Lam	Chan Ka Ling	Chan Ka Leung	Cheng Pui Fun	Cheung Chik	Chow Lai Chi	Fan Chun Lung	Ho Pik Lan
Chan Kam Kwong	Chan Hoi Kee	Chan Tsoi Ying	Cheng Nga Yan	Cheung Tin Yu	Chow Kit Wai Shirley	Fan Wai Ling	Ho Sze Wai
Chan Wo Chuang	Chan Tak Keung	Chan Choi Yee	Cheng Lai Lai	Cheung Wai Yan	Chow Choi Luen	Fan Yat Fong	Ho Wing Yin
Chan Sau Kuen	Chan Kwei Fun	Chan Yiu Shing	Cheng Ki Hin	Cheung Poon Mei Yee	Chow Ku Kwan	Fan Wai Ching Vicky	Ho Wai Chu Jennifer
Chan Sau Ming Edith	Chan Wing Hung	Chan Mei Chun	Cheng Sau King	Chi Chung Hui	Chow Chit Wing	Fan Hoi Yan Shirley	Ho Yuk Lin
Chan Wah Hung	Chan Wing Yu	Chan King Yung	Cheng Hoi Ching	Chi Hui Tjeng	Chow Jok Mei	Fan Ka Wai	Ho Woon Chi
Chan Yiu Fai Youdey	Chan Yuen Hung	Chan Shun Shing	Cheok Wing Hong	Chiang Chung Man	Chow Tsz Pan	Fok Yik Chun	Ho Hiu Miu
Chan Suk Yee	Chan Kar Man	Chan Wai Kam	Cheuk Kam Lok	Chiang Siu Yan	Chow Kai	Fok Wai Ip	Ho Yiu Lun
Chan Cho Leung	Chan Ho Yin	Chan Jessica	Cheung Wo Fuk	Chiang Pak Lun	Chow Yin Yee	Fong Tze Hang	Ho Ming Chun
Chan Wing Keung	Chan Man Yi	Chan Pui Yiu	Cheung Yiu Leung	Chick Kwan Ho	Chow Chi Sun Gary	Fong Kwai Chuen	Ho Wai Hing
Chan Ka Wai	Chan Mei Ying	Chan Kam Lam	Cheung Yuk Bing	Chick Wing Kei	Chow Lai Ming	Fong Man Pui	Ho Kwai Mui
Chan Kam Wah Michelle	Chan Yuen Sze	Chan Wing Shan Forra	Cheung Choi To	Chik Cham Yuen	Chow Wai Nam	Fong Wu Shuen	Ho Kin Chi
Chan Chun Yau	Chan Chun Shing	Chang Bee Wan	Cheung Mi Lin Anita	Chin Wesley C	Choy Tsam Ue	Fong Yuk Fun	Ho Yiu Cheung
Chan Chor Ho	Chan Miu Sheung Wendy	Chang Ting Chung	Cheung Hau Fuk	Chung Man Chung Henry	Choy Siu Wan	Fong Siu Ying, Serena	Ho Sin Hing
Chan Wai Ki	Chan Chi Hung	Chang Shun Ming	Cheung Ho Yu Anton	Cheung Man Chung	Chu Yat Wing	Fong Lap Tak	Ho Po Kuen
Chan Pui Sze Candy	Chan Ho Lun	Chang Ka Chung	Cheung Man Chung Henry	Cheung Man Sun	Chu Chun Wai	Fong Ngan Kuen	Ho Suet Ming
Chan Chung Shing	Chan Kin Wah	Chang Wai Hung	Cheung Man Sun	Cheung Yuen Lai	Chu Suk Chun	Foo Yik Ling	Ho Sze Wai Brenda
	Chan Pak Chu	Chang Wai Man	Cheung Chi Kwong	Ching Lai Ching	Chu Mei Wah	Foo Pui Yu	Ho Ming Cheung



Tam Nok Hei	Tong Lee Chong	Tsui Wang	Wong Shui Leung	Wong Kit Ling	Wong Chi Fai	Yeung Ping Sang	Yu Lai Fong Winnie
Tam Ka Wai	Tong Ka Hei	Tsui Shuk Ki	Wong Yee Wa	Wong Chun Chung	Wong Tak Chuen Danial	Yeung Sze Yee	Yu Yuen Ting Erica
Tam Shui Ping	Tong Kim Wah	Tsui Nang Ping	Wong Yuen Fong	Wong Chun Chun	Wong Siu Ling Dolla	Yeung King	Yu Lun Ping
Tang Wai Mei	Tsang Yee Pang	Tsui Lai Wun	Wong Wai Yan	Wong Wai Tsz	Woo Mong Wo	Yeung On Leung Thomas	Yu Ho Yin
Tang Po Yin	Tsang Kin Ning	Tung Yui Hung	Wong Kim Wai	Wong Cheuk Man	Woo Ka Po	Yeung Mei Po	Yu Lok Yuen
Tang Suk Lin	Tsang Wai Lan	Tung CY Keith	Wong Wing Yan	Wong Ka Ki	Woo Kwai Sheung	Yeung Ying Hung	Yu Sum Ning
Tang Mei Kuen Maggie	Tsang Pui Ham	Tze Wai Kin	Wong Ching Chuen	Wong Ka Wai	Josephine	Yeung Man Yee	Yu Man Man Ariel
Tang Tsz Leung	Tsang Kwan Fung Isabelle	Unchalee Sae Heng	Wong Pui Ying Joyce	Wong Suk Wan	Wu Po Ping	Yeung Kit Ying	Yu Man Hei
Tang In Chan	Tsang Wai Ling Simon	Wai Janet	Wong Chun To	Wong Wai Chun	Wu Chi Kuen	Yeung Wing Ting Shirley	Yu Lee Ping
Tang Jin Xiao	Tsang Kwok Keung	Wan Ping Hung	Wong Siu Lun	Wong Ho Fai	Wu Shuo Jung Serena	Yeung Sau Ha Sarah	Yu Wai Man Carol
Tang Pui Yan Grace	Tsang Lai Ling	Wan Wing Pui	Wong Wing Sze	Wong Man Yee	Wu May Yung	Yeung Chak Ming	Yu Tsz Yiu
Tang Siu Lin	Tsang Mung Ling	Wan Man Keung	Wong Yee Chun Andrew	Wong Ka Lok	Wu Qing	Yeung Pui Shan	Yu Hoi Wing
Tang Wai Kei	Tsang Hon Kit	Wan Pik Keung	Wong Hok Leung	Wong Wai Yin	Wu Jiatong	Yeung Choi Ling	Yu Chi Man
Tang Yuk Sheung	Tsang Ka Wai	Wan Man Tim	Wong Wai Pong	Wong Ka Pun	Wu Hoi Shan	Yeung Fung Yee	Yu Sui Wai
Tang Sai Mui	Tsang Sik Man	Wan Chin Choi	Wong Wing Hei	Wong Wai Ling	Wu Yuk Hing	Yeung Kam Sheung	Yu Pik Kiu
Tang Tai Chi	Tsang Kin Ming	Wan Sai Cheong	Wong Pui Yuen	Wong Kam Fai	Wu Chun Hung	Yeung Chung Chuen	Yu Chun Wai
Tang Chi Kwan Ellen	Tsang Chun Kau	Wan Ka Wai Bee	Wong Siu Man	Wong Kwan Yin	Wu Yuen Tak	Yeung Chung Keung	Yuan Jia Min
Tang Kwong Yuen	Tsang Tsz Kin	Wan Lap Kee	Wong Hay Yau Victor	Wong Chi Kei	Wu Ka Hing	Yi Ling	Yuen Lai Fong
Tang Hing Chan	Tsang Wing Shing	Wan Ka Po	Wong Ngan Fung	Wong Ka Ho	Wu Nan Nan	Yi Hui Qun	Yuen Pui Shan
Tang Yuet Chun	Tsang Pit Wai Leo	Wan Wai Man Vivian	Wong Shuk Lam	Wong Chi Kuen	Wun Sau Ying	Yip Ka Man	Yuen Lik Kan
Tang Yuk Ling	Tsang Tsz Kin	Wan Wong Yuk Ha	Wong Wai Kai Paul	Wong Wing Fai	Xu Yuan Hao	Yip Hui Tung	Yuen Sau Chun Jennifer
Tang Yiu Ki	Tsang Lap Man	Wang Yuk Wah	Wong Wai Lun Allen	Wong Wai Kuan	Xu Zi Ying	Yick Kin Tsang	Yuen Wai Yuk Annie
Tang Sau Pik Karana	Tsang Fung Mei	Wang Qi	Wong Hon Wang	Wong Shu Ting	Xu Chao Yao	Yick Wing King	Yuen Wai Pang
Tang Yuk Chun	Tsang Lee Woon Lui	Wang Tak Chiu	Wong Wing Wah	Wong Oi Ha	Xu Zhenbo	Yik Hoi Lun William	Yuen Mei Ki Maggie
Tang Chak Yin	Tse Hon Chiu	Wang Chun Fung	Wong Wai Yan	Wong Kwok Chun	Xu FengQin	Yim Ka Kin	Yuen Hoi Luen Dorothy
Tang Chan Yee	Tse Man Yiu	Wat William	Wong Shuk Ying	Wong Chi Yi	Xu Bo	Yim Ka Ling	Yuen Ka Lam
Tang Wing Sze	Tse Chi Man	Watt Po Kau	Wong Yee Ting	Wong Yu Ho	Yam Chin Yan	Ying Hoi Lam	Yuen Chun Pong
Tang Pui Ping	Tse Pik Chu	Wenn Yin Kun Joyce	Wong Ling Chuen	Wong Ming Wai	Yam Ping Hung	Ying Sin Ying	Yuen Pui Shan
Tang Chi Hang	Tse Chun Yu	Wilson & Amy Yeung	Wong Chui Hung	Wong Yun Hei	Yan Chong Sun	Yip Wai Hung	Yuen Shui Luen
Tang Siu Hang	Tse Shing Fai	Wong Yat Cheung	Wong Wai Kuen	Wong Wing Hin	Yan Tsz Yau	Yip Wing Cheung	Yuen Shok Yin
Tang Chi Ming Thomas	Tse Yuk Ting	Wong Yuet Shan Sandy	Wong Ying Ping	Wong Lai Ming	Yan Wai Hon	Yip Kwok Kwong	Yuen Janya
Tang Kit Yee	Tse Ka Yam	Wong Lai Har Clair	Wong Cho Shing	Wong Ka Man	Yang Yaning	Yip Kwai Chun	Yeung Pik Lin
Tang Lai Wah	Tse Mei Yuk Barbara	Wong Wing Hon	Wong Yuk Ping	Wong Wing Yau	Yang Lan	Yip Wai Hung	Yeung Ngai Pan
Tsang Wai Chun	Tse Hung Un	Wong Kin Wing	Wong Wing Tung	Wong Siu Keung	Yao Kar Shui	Yip Ka Ho	Yung Eddy
Tay Keng Puang	Tso Yok Chuen	Wong Wai Lan	Wong Hoi Chu	Wong Wai Wo	Yap Wai Kwong	Yip Ngo Seung	Yung Yiu Cho
Teon Mee Eng	Tsoi Chau Yuet	Wong Sin Yi	Wong Wing Hang Dominic	Wong Kwai Lin	Yau Pik Sang	Yip Chi Ming	Yung Wai Yan
Tin Winnie Wing Yan	Tsoi Yun Sang	Wong Sin Wan Cindy	Wong Ho Ting	Wong Po Yi Polly	Yau Lai Kuen	Yip Kit Hong	Yung Chun Yan
Ting Kwok Yin	Tsoi Yin Fun	Wong Wan Choi	Wong Wing Yu	Wong Wai Yee	Yau Yuen Ling	Yip Mei Mei May	Yung Kwok Kin
To Chui Ping	Tsoi Tse Wai	Wong Lin Ping	Wong Ka Lai Carrie	Wong Sau Kuen	Yau Ka Shing	Yip Wai Li	Yung Hin Tat Kenneth
To Oi Yung	Tsoi Wang Kwong	Wong Lai Yu	Wong Kam Kuen	Wong Ching Hin	Ye Feng Li	Yip Hau Cheong	Yung Yuk Sim Backey
To Kai Tung	Tsui Wai On Simon	Wong Lin Fong	Wong Wai Yee	Wong Kwok Wai Benny	Yee Chung Man	Yiu Yuk Lai	Yuo Pui Lan
To Chi Ling	Tsui Chi Keung	Wong Tat Hei	Wong Cho Yee	Wong Po Chun	Yee Shing Hung	Yiu Hui Wa	Zeng Xiao Yuan
To Kuen	Tsui Wan Hing	Wong Wen Lan	Wong Yee Tsun Amy	Wong Wai Sheung	Yeh San Ju	Wong Siu Cheung	Zhang Min
To Pik Yu	Tsui Yuk Lin	Wong Lai Chan Maria	Wong Yuk Ying	Wong Kwan Wah	Yeo Suk Khoon	Wong Yi Kwan	Zhong Kai hui
To Siu Mei	Tsui Chun Wa	Wong Mei Ha	Wong Koon Wah	Wong Hoi Ki	Yeung Hin Wai	Wong Mei Yin	Zhou Zhen Yan
Tong Yiu Ming	Tsui Tsz Kin Ernest	Wong Pui Yin	Wong Lai Hung	Wong Hoi Ching	Yeung Sau Kum	Wong Man Sze	Zoe Yip
Tong Fu Tak	Tsui Yuk Fung	Wong Yeuk See Alice	Wong Chi Kwan	Wong Man Sze	Yeung Fung Ming	Wong Kok Hei	
Tong Ka Chun Calvin	Tsui Shiu Ping Sara	Wong Sau Fan	Wong Yee Tak Eddie	Wong Yuk Fai	Yeung Lok Ki	Young Paul	
Tong Suk Han	Tsui Hon Ting	Wong Sheung	Wong Wai Man	Wong Chi Kan	Yeung Kwan Yung	Yu Tsui Har	
Tong Hoi Ki	Tsui Chi Sing	Wong Yuet Chui Florence	Wong Tin Wah	Wong Kin Ying	Yeung Yuen Ching	Yu Yeung Chung	



Your donation means a great deal to the beneficiaries.  
Regular or particular donation through one of the following ways is welcome.

 **PayMe**  
HOPE worldwide

用 PayMe 一掃即 Pay






**Credit card / Alipay HK**

 **HOPE worldwide website**



 **Crossed cheque**

Cheque payable to "HOPE worldwide", please send to HOPE worldwide office in Shek Kip Mei.

 **Monthly donation**

Please call HOPE worldwide for the application form or download from the website.



HOPE worldwide FPS No.:  
160 212 338

 **Deposit into HOPE worldwide bank account**

HSBC 024-134090-002 or  
Bank of China 012-925-0-001839-8

(A donation receipt can be issued for \$100 or more, please WhatsApp the proof of payment to 5540 1340, and indicate the mailing address of the donor.)